

Moku:Pro

Specifications



Table of Contents

Moku:Pro Hardware	5
Specifications.....	5
Analog I/O.....	5
Clock reference	6
General characteristics.....	7
General connectivity	8
Safety Information	9
Hardware measurements.....	10
ADC input noise.....	10
ADC crosstalk.....	11
Analog output noise.....	13
Moku:Pro's Arbitrary Waveform Generator	14
Description	14
Specifications.....	15
Common.....	15
Waveform.....	16
Moku:Pro's Frequency Response Analyzer	17
Description	17
Specifications.....	18
Source.....	18
Input.....	18
Measurement.....	19
Saving Data	19
Moku:Pro's Data Logger	20
Description	20
Specifications.....	21
Input.....	21
Logging.....	21
Moku:Pro's Digital Filter Box	22
Description	22
Specifications.....	23
Inputs.....	23
Filter characteristics.....	23
Selecting the right IIR filter.....	24
Moku:Pro's Laser Lock Box	25
Description	25
Specifications.....	26
Signal input.....	26
Internal demodulation local oscillator.....	26
External demodulation reference	26
Low-pass filter.....	27

Auxiliary oscillator.....	27
Scan waveform.....	27
PID Controllers	28
Saving data.....	29
Moku:Pro's Lock-In Amplifier	30
Description	30
Specifications.....	31
Signal channel.....	31
External reference.....	31
Internal reference.....	32
Demodulator.....	32
Signal output.....	32
Saving data.....	33
Moku:Pro's Oscilloscope	34
Description	34
Specifications.....	35
Vertical characteristics.....	35
Horizontal characteristics.....	35
Trigger.....	36
Measurements.....	36
Integrated waveform synthesizer.....	37
Moku:Pro's Phasemeter	38
Description	38
Specifications.....	39
Inputs.....	39
Measurement.....	39
Saving Data	40
Synthesizer.....	40
Moku:Pro's PID Controller	41
Description	41
Specifications.....	42
Inputs.....	42
Controller.....	42
Moku:Pro's Spectrum Analyzer	43
Description	43
Specifications.....	44
Frequency.....	44
Amplitude	44
Synthesizer.....	45
Moku:Pro's Waveform Generator	46
Description	46
Common characteristics.....	47
Waveform characteristics.....	47

Modulation.....	48
Moku:Pro's Multi-Instrument Mode	50
Description	50
Common characteristics.....	51

Moku:Pro Hardware

Specifications

Analog I/O

Analog inputs

Channels	4
Bandwidth (-3 dB)	300 MHz / 600 MHz switchable
Sampling rate	5 GSa/s with 1 channel, and 1.25 GSa/s with 4 channels.
Resolution	10 bits (high bandwidth) / 18 bits (low bandwidth)
Maximum voltage range	40 V _{pp} into 1 M Ω ¹
Input impedance	50 Ω / 1 M Ω
Input coupling	AC / DC
AC coupling corner (-3 dB) ²	160 kHz into 50 Ω 16 Hz into 1 M Ω
Input referred noise	30 nV/ $\sqrt{\text{Hz}}$ @ 100 Hz
Effective number of bits (ENOB)	8.8 bits
Connector	BNC

Analog outputs

Channels	4
Bandwidth (maximum output frequency)	500 MHz (2 V _{pp} into 50 Ω), 100 MHz (10 V _{pp} into 50 Ω)
Sampling rate	1.25 GSa/s per channel
Resolution	16-bit
Voltage range	10 V _{pp} into 50 Ω
Output impedance	50 Ω
Output coupling	DC
Connector	BNC

¹ 50 Ω frontend impedance can only support input voltages up to 4V_{pp}.

² For Moku:Pro's shipped prior to April 2022, corners are 16 kHz into 50 Ω and 1.6 Hz into 1 M Ω

Clock reference

On-board clock

Frequency	10 MHz
Stability	< 300 ppb

10 MHz reference input

Expected waveforms	Sine / square
Frequency	10 MHz \pm 20 kHz
Input range	-6 dBm to +10 dBm
Connector	BNC

10 MHz reference output

Waveform type	Square
Output frequency	10 MHz
Output level	1.4 V _{PP}
Connector	BNC

General characteristics

General and environmental characteristics

Power consumption	115 W typical
Power voltage range	100 - 240 V [~] +/- 10%, 50/60 Hz The equipment shall be plugged into a socket outlet with reliable protective earthing contact.
Temperature	Operating: 0 to +45 °C Non-operating: -10 to +60 °C Do not obstruct the cooling fan outlets. 20 cm ventilation clearance is required.
Humidity	R.H. 5% to 95% noncondensing
Operating Altitude	Up to 10,000 feet (3000m)
Other requirements	Intended for indoor use only
Pollution degree	2
Overvoltage category	OVC II

Electromagnetic compliance



Physical characteristics

Dimensions	Width: 44 cm (17.30 in.) Depth: 33 cm (13.00 in.) Height: 7 cm (2.80 in.)
Weight	6.7 kg (14.77 lbs)

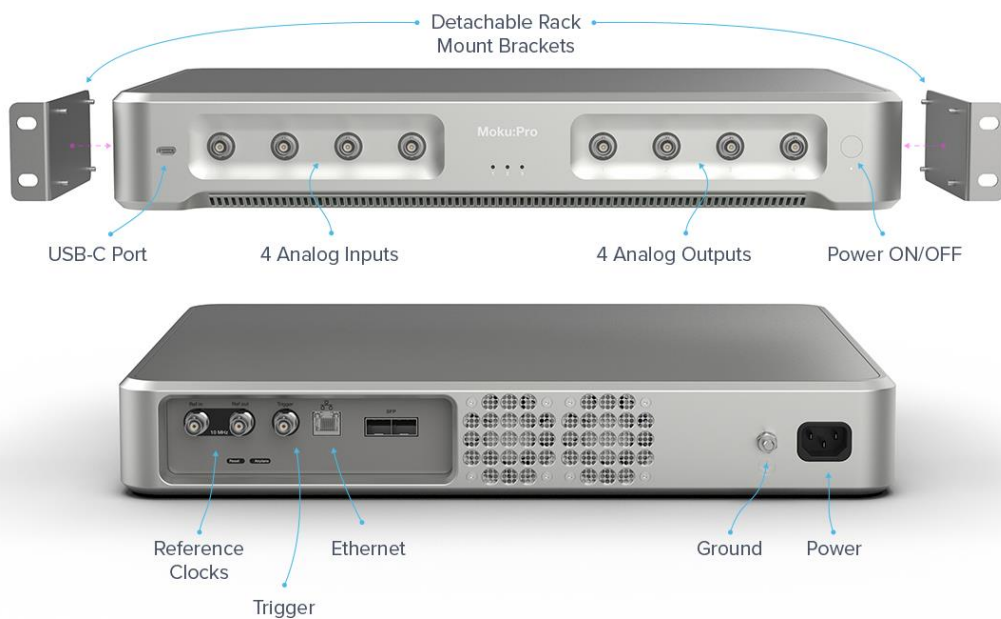
General connectivity

Connectivity

Analog inputs	4 x BNC
Analog outputs	4 x BNC
Network	Ethernet (10/100/1000 Base-T) Wi-Fi 802.11 b/g/n
USB data port	Type-C // For connecting the iPad to the Moku:Pro via USB
External trigger input	BNC
10 MHz clock reference input	BNC
10 MHz clock reference output	BNC

Available accessories

Rack mount brackets	x 2 // secured by 4 screws each (supplied)
---------------------	--



Safety Information

Safety

Manufacturer	Liquid Instruments Pty Ltd, 243 Northbourne Avenue, Suite 2, Lyneham, ACT 2602, Australia
Cleaning	Clean loose dust on exterior with lint free, dry cloth
Impairment	If the equipment is used in a manner not specified by the manufacturer, the protection provided by the equipment may be impaired.
Power cable	Do not use a mains power supply cord other than the one provided by the manufacturer. Please contact the manufacturer/representative office if a replacement mains power supply cord is needed.

Symbols



Caution: consult accompanying documents



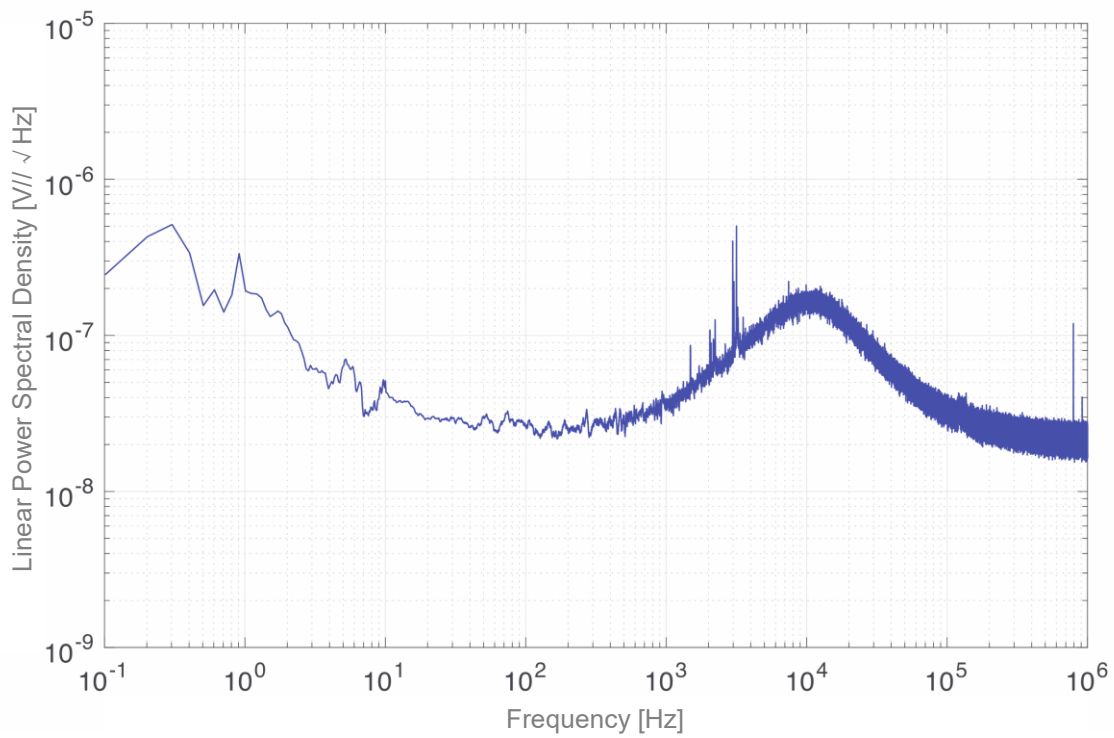
Warning: risk of electric shock

Hardware measurements

ADC input noise

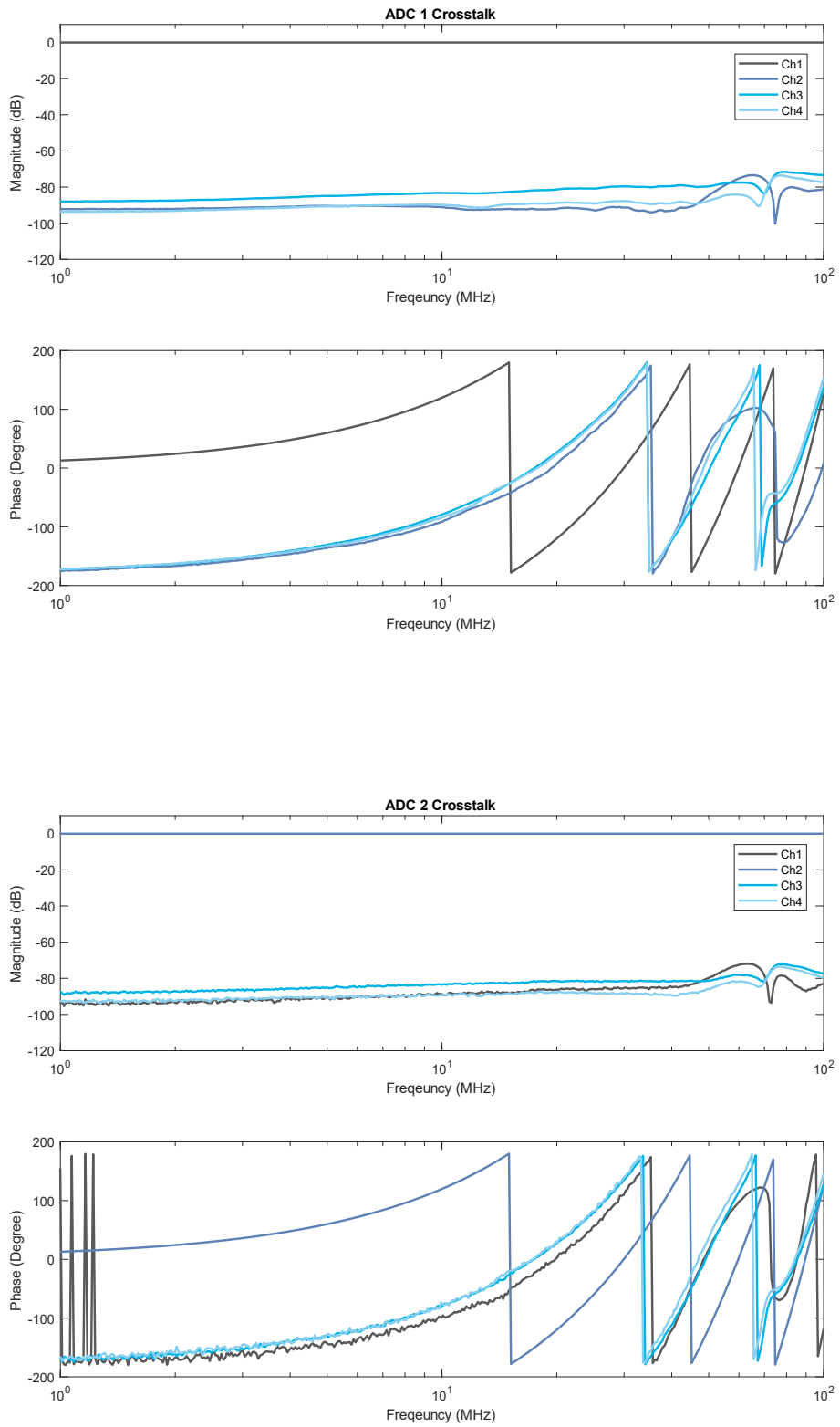
1 M Ω // DC coupled // 0 dB attenuation

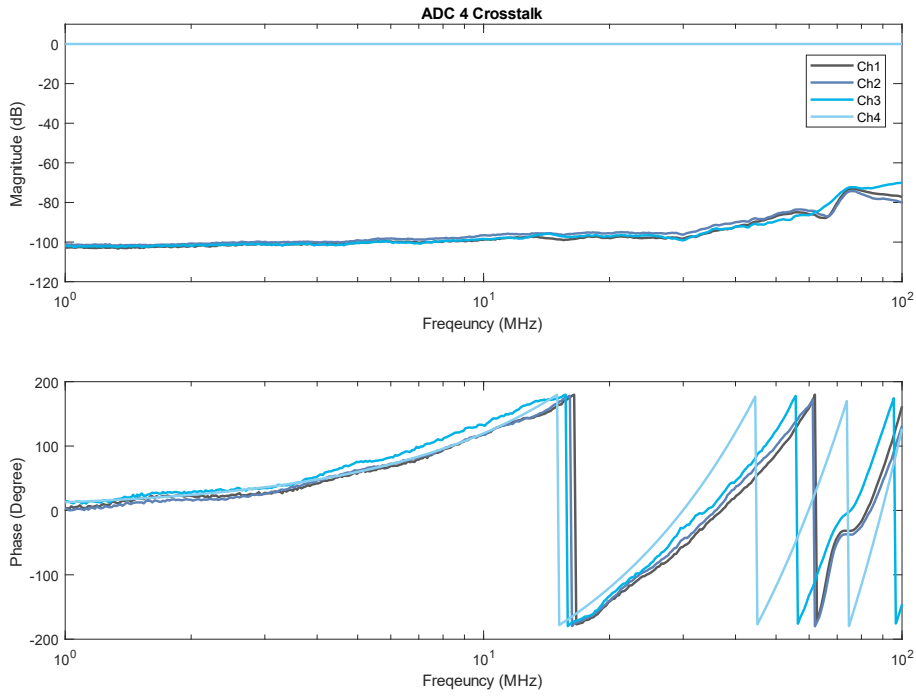
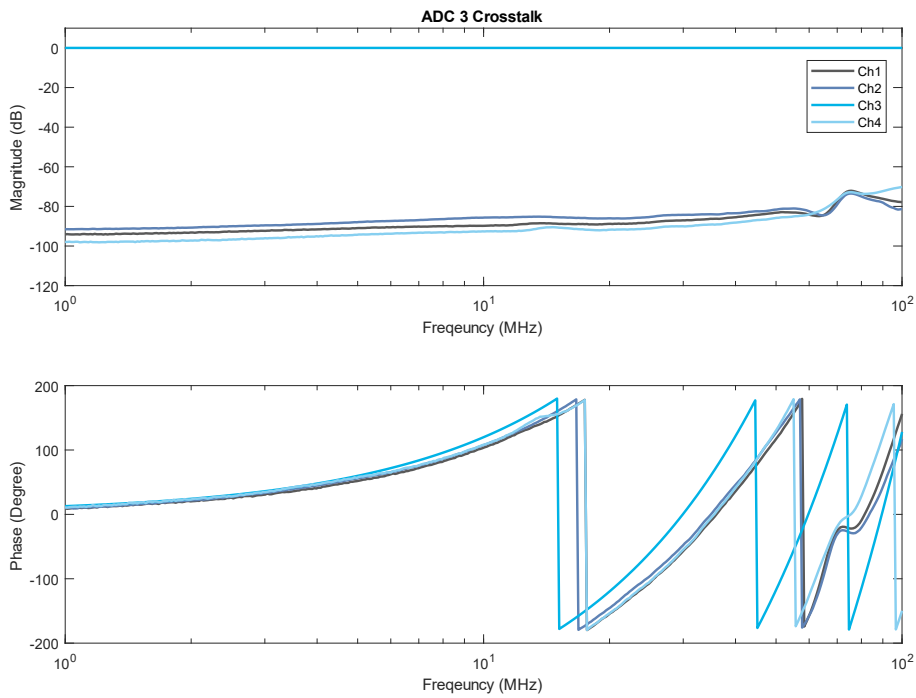
Acquisition mode: Precision // Sampling rate: 2.5 MSa/s



ADC crosstalk

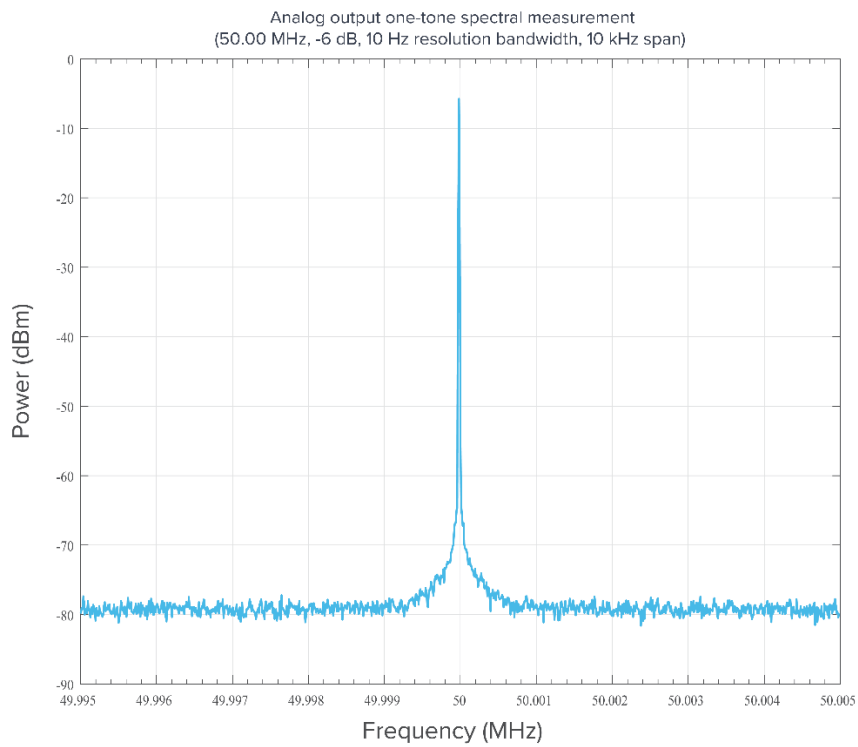
50 Ω // DC coupled // 0 dB attenuation



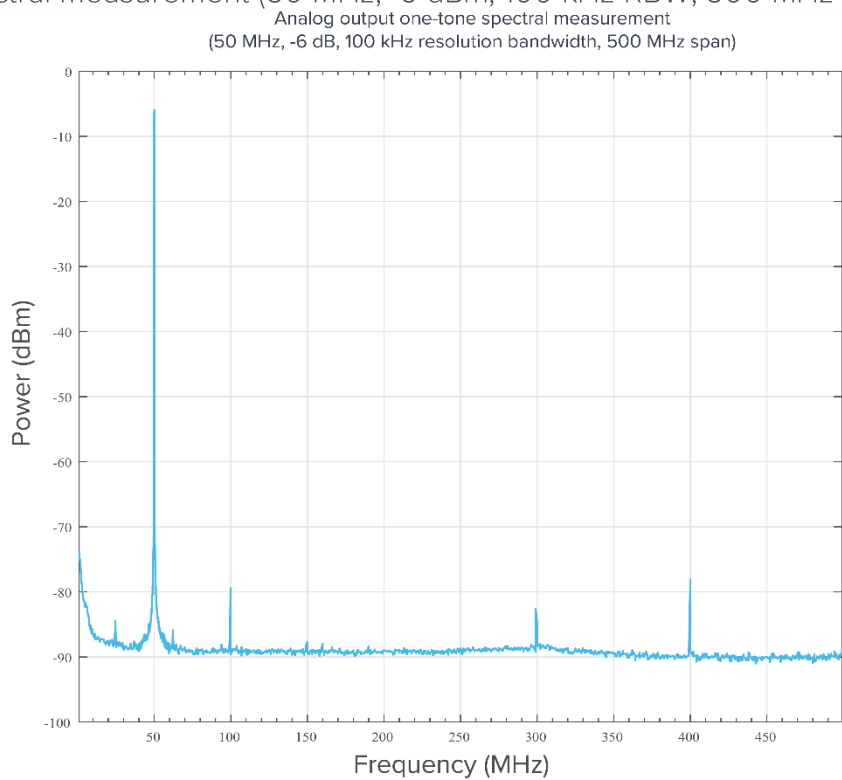


Analog output noise

One-tone spectral measurement (50 MHz, -6 dBm, 10 Hz RBW, 10 kHz span)



One-tone spectral measurement (50 MHz, -6 dBm, 100 kHz RBW, 500 MHz span)

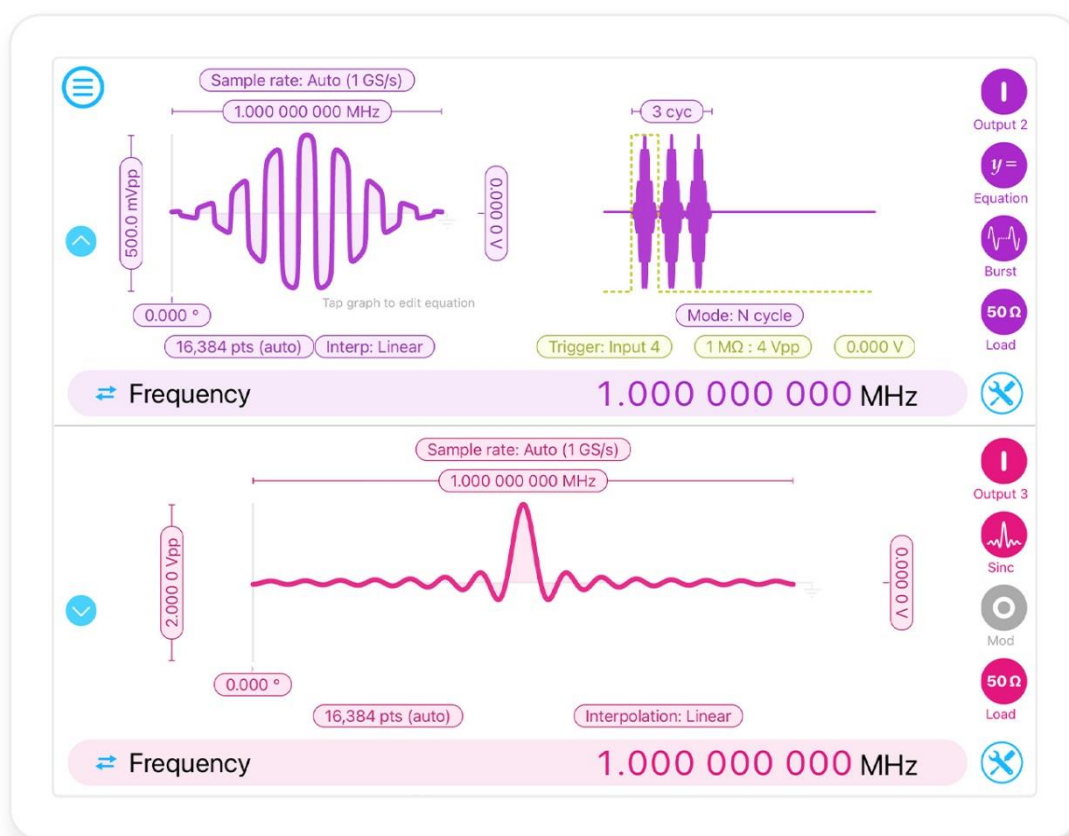




Moku:Pro's Arbitrary Waveform Generator

Description

Moku:Pro's 4 channel Arbitrary Waveform Generator can generate 4 custom waveforms with up to 65,536 points and sample rates ranging from 312.5 MSa/s to 1.25 GSa/s. Waveforms can be loaded from a file or input as a piece-wise mathematical function with up to 32 segments, enabling you to generate truly arbitrary waveforms. In burst mode, waveform generation can be triggered from input channels with start or n cycle modes. In pulsed mode, waveforms can be output with more than 250,000 cycles of dead time between pulses.



Features

- Four independent AWG channels with up to 500 MHz bandwidth
- Choose between pre-set waveforms, load points from a file, or input an equation directly
- Phase synchronization output between the four channels
- Configure pulsed output with up to 250,000 cycles of dead time between pulses



Specifications

Common

Overview

Channels	4
Sampling rate	312.5 MSa/s, 625 MSa/s, 1.25 GSa/s
Source impedance	50 Ω
Output load	50 Ω / 1 M Ω
Waveforms	Sine, Gaussian, Exponential Fall, Exponential Rise, Sinc, Equation, Custom (from file)

Amplitude

Output voltage range	2 Vpp @ 625 MSa/s and 1.25 GSa/s 10 Vpp @ 312.5 MSa/s
Resolution	100 μ V

DC offset

Range (peak AC + DC)	\pm 5 V into 50 Ω \pm 20 V into high impedance
Resolution	100 μ V

Phase offset

Range	0° to 360°
Resolution	0.001°



Waveform

Custom

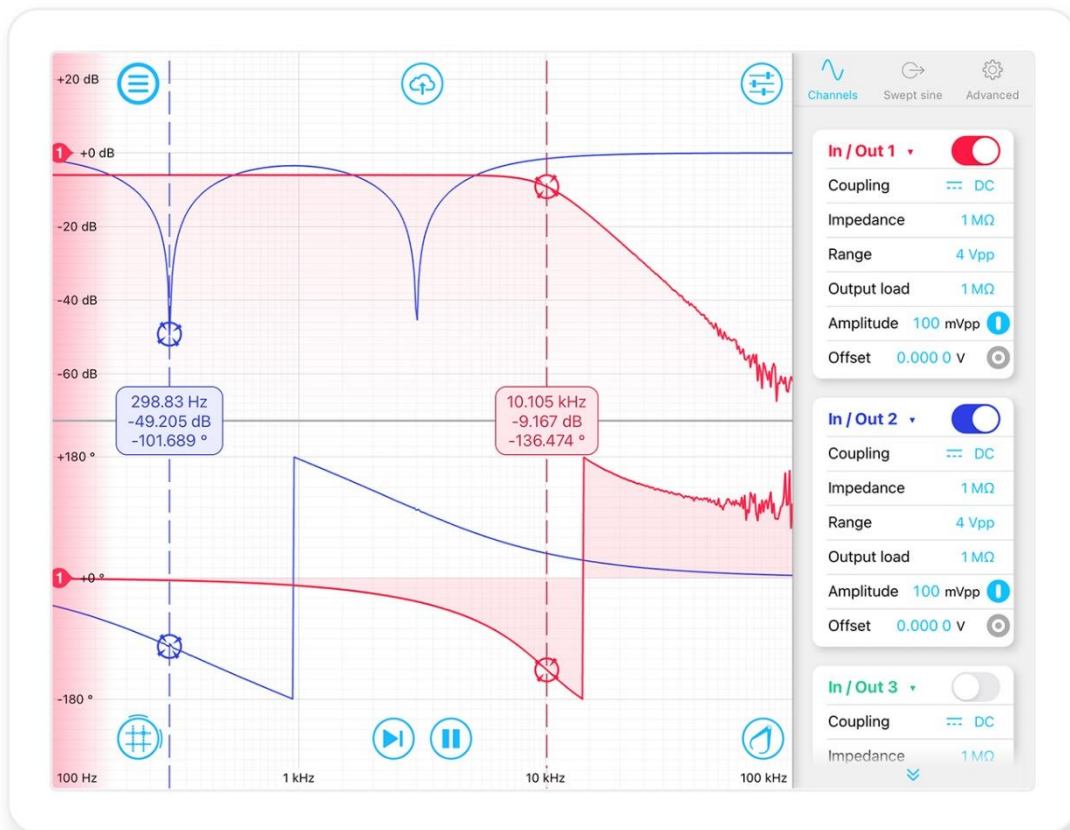
Maximum output rate	312.5 MSa/s	65,536 points
	625 MSa/s	32,768 points
	1.25 GSa/s	16,384 points
Text file type	Clipboard, My Files	
File import options	None, Linear	
Interpolation	2 ns	
Minimum edge time	$\leq 10\%$ for edge times between 4 ns and 8 ns	
	$\leq 2\%$ for edge times greater than 8 ns	
Period range	4 ns to 1 ks	



Moku:Pro's Frequency Response Analyzer

Description

Moku:Pro's Frequency Response Analyzer enables you to measure the frequency response of a system in both magnitude and phase using a swept sine output from 10 mHz to 300 MHz with a noise floor as low as -135 dBm. Moku:Pro is equipped with four inputs and four outputs ports, enabling differential or ratio metric measurements. Select up to 8192 points per sweep and configure settling and averaging times to balance total sweep duration and signal-to-noise ratio.



Features

- Linear or logarithmic swept sine output
- Math channel to add, subtract, multiply or divide response functions as they are acquired
- Measure key metrics with cursors and markers
- Configurable measurement averaging and settling times
- Demodulate up to 15th harmonic



Specifications

Source

Source

Waveform	Sine
Frequency range	10 mHz to 300 MHz
Sweep type	Linear / Logarithmic
Sweep points	32, 64, 128, 256, 512, 1024, 2048, 4096, 8192
Output amplitude range	± 0.5 mV to ± 5 V into 50 Ω
Source impedance	50 Ω

Input

Input characteristics

Input impedance	50 Ω / 1 M Ω
Input coupling	AC / DC
Input attenuation	0 dB / 20 dB / 40 dB
Input voltage range	0.4 V _{PP} into 50 Ω with 0 dB attenuation 4 V _{PP} into 50 Ω with 20 dB attenuation 40 V _{PP} into 1 M Ω with 40 dB attenuation
Input noise	30 nV/ $\sqrt{\text{Hz}}$ @ 100 Hz
Crosstalk	< 60 dB
Noise floor	< 100 kHz : < -125 dBm 100 kHz – 300 MHz : < -135 dBm



Measurement

Measurement characteristics

Measurement mode	In/Out (dB), In/In1 (dB) or In (dBm)
Settling time	Min. Greater of 1 μ s or 1 cycle
	Max. 10.0 seconds
Averaging time	Min. Greater of 1 μ s or 1 cycle
	Max. 10.0 seconds
Normalization	Normalizes magnitude and phase using a reference sweep ³
Absolute gain error	<0.05 dB
Absolute phase error	< 0.5°

Saving Data

Saving data

File formats	Plain text: records data using a standard *.csv format
	Binary: records data using MathWorks' *.mat format which can be opened using MATLAB
Export modes	Dropbox, E-mail and iCloud, My Files (iOS 11)

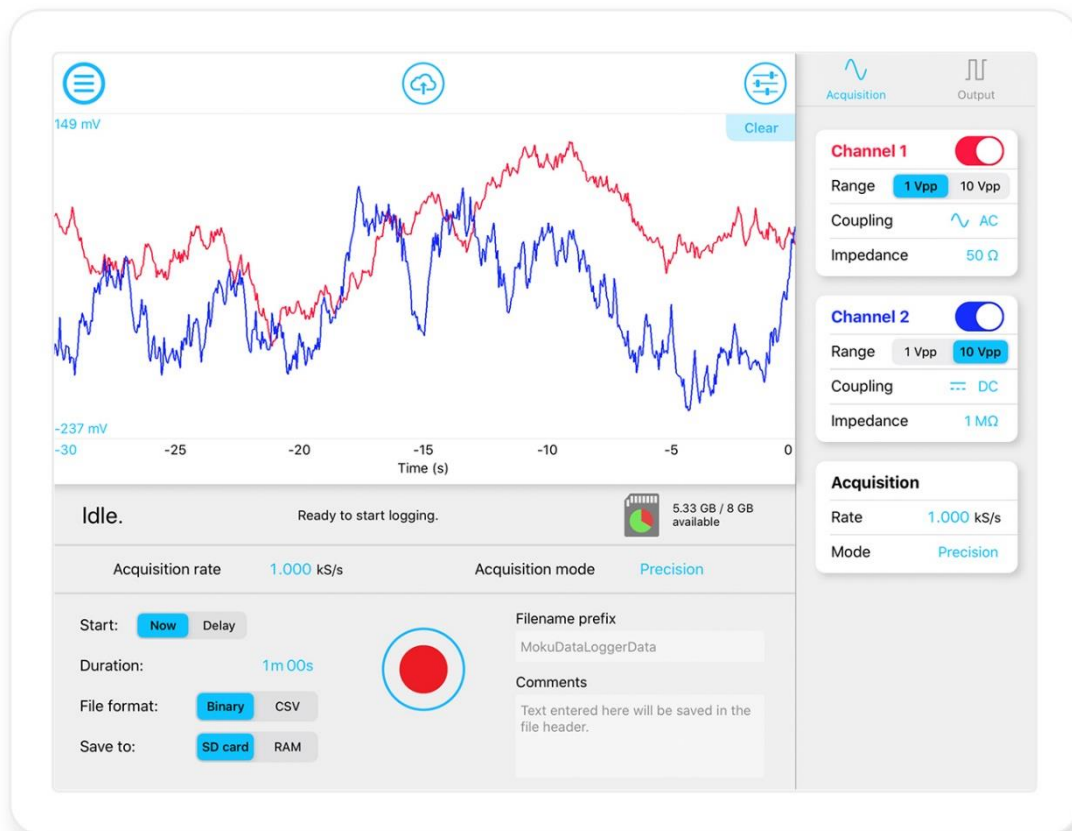
³ The normalization feature can be used to isolate the magnitude and phase response of the system under test by compensating for deviations in magnitude and phase caused by delays (e.g., caused by cables) and the frequency response of the Moku:Pro's analog frontend. As an alternative the In/In1 mode may also be used, removing the need to take a normalization sweep.



Moku:Pro's Data Logger

Description

Moku:Pro's Data Logger enables you to log data to its 120 GB internal solid-state drive with sampling rates of up to 10 MSa/s. Four inputs are equipped with dual 10-bit and 18-bit ADCs. With blended ADC technology, input noise is down to 30 nV $\sqrt{\text{Hz}}$ at 100 Hz, providing ultra-low noise data logging from acoustic to RF frequencies. Moku:Pro is also equipped with a 10 MHz clock synchronization I/O, and four 500 MHz outputs, allowing flexible integration with other electronics.



Features

- Log voltage data on four independent channels to its 120 GB SSD
- Built-in four-channel 500 MHz waveform generator
- 10 MHz clock synchronization ports
- Easily export data to computer, Dropbox, and other cloud-based services
- Schedule your log to start with a delay of up to 10 days



Specifications

Input

Voltage

Input voltage range	0.4 V _{PP} into 50 Ω with 0 dB attenuation 4 V _{PP} into 50 Ω with 20 dB attenuation 40 V _{PP} into 50 Ω with 40 dB attenuation
Input impedance	50 Ω / 1 MΩ
Input coupling	AC / DC

Logging

Acquisition

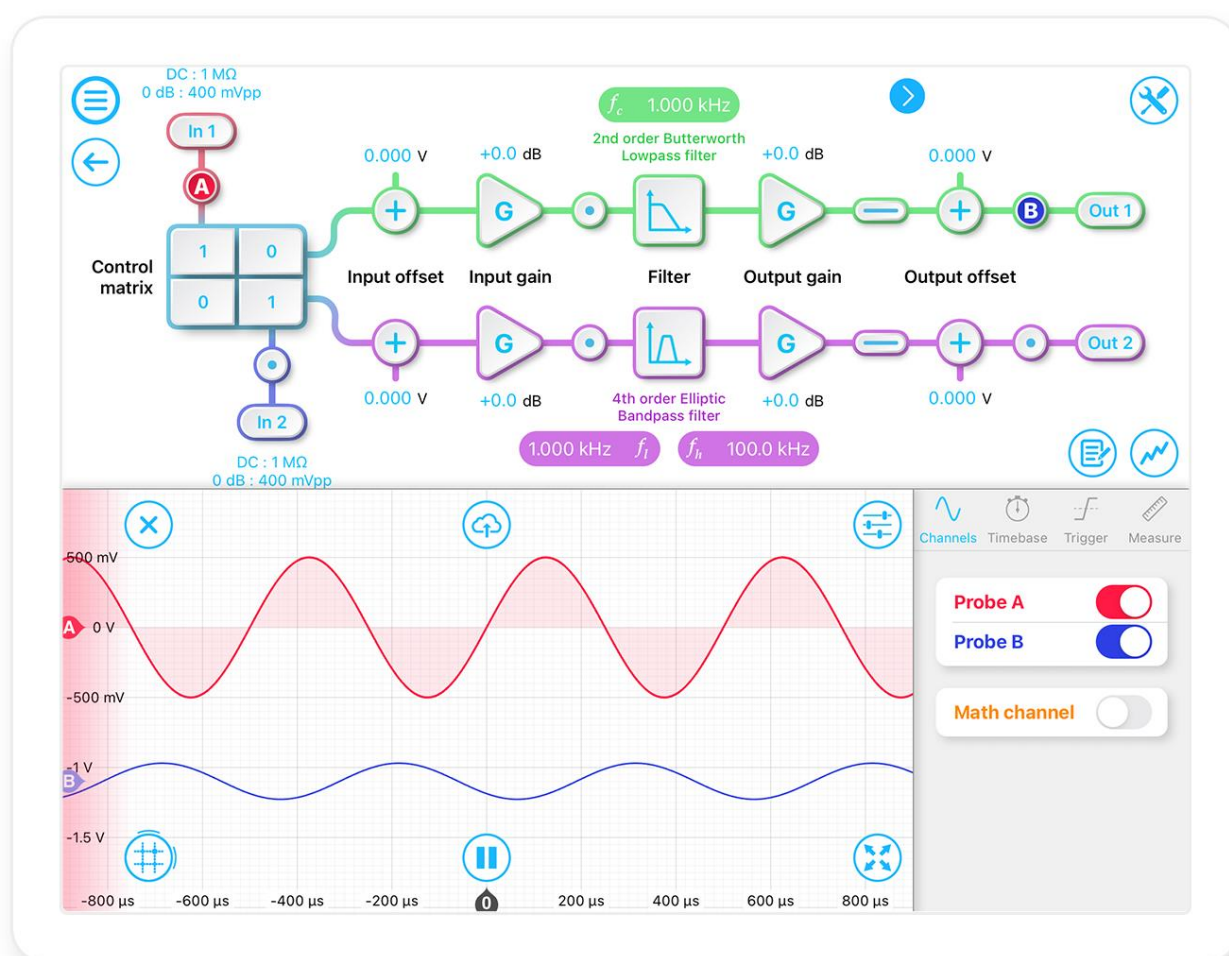
File formats	Binary: records data using a proprietary LI format for high-speed data logging. Note: data saved using the LI format must be converted to plain text using the LI file converter available here: https://github.com/liquidinstruments/lireader
Export modes	Dropbox, E-mail and iCloud, My Files (iOS 11)
Maximum sampling rate	10 MSa/s for 1 channel 5 MSa/s for 2 channels 2.5 MSa/s for 4 channels
Delayed log start time	Up to 240 hours
Log duration	1 second up to 240 hours



Moku:Pro's Digital Filter Box

Description

With Moku:Pro's Digital Filter Box, you can interactively design and generate different types of infinite impulse response filters with output sampling rates of 305.18 kHz and 39.063 MHz. Select between lowpass, highpass, bandpass, and bandstop filter shapes with up to eight fully configurable types including Butterworth, Chebyshev, and Elliptic.



Features

- Design IIR filters using an interactive Bode plot
- Observe signals at different stages in the digital signal processing chain using probe points
- View the frequency response of your filter in both magnitude and phase
- Filter up to four channels of data simultaneously with the ability to blend input signals
- Implement custom filters by uploading your own coefficients



Specifications

Inputs

Input characteristics

Channels	4
Input control matrix coefficients	-20 to +20
Input impedance	50 Ω / 1 M Ω
Input coupling	AC / DC
Input attenuation	0 dB / 20 dB / 40 dB
Input voltage range	400 mVpp into 50 Ω with 0 dB attenuation

Filter characteristics

Pre-filter

Input offset range	± 1 V
Input offset resolution	1 mV
Input gain range	-40 dB to +40 dB
Input gain resolution	0.1 dB

Post-filter

Output offset range	± 1 V
Output offset resolution	1 mV
Output gain range	-40 dB to +40 dB
Output gain resolution	0.1 dB

General filter characteristics

Filter shapes	Lowpass, Highpass, Bandpass, Bandstop, Custom
Sampling rates	305.18 kHz, 39.063 MHz
Filter types	Butterworth, Chebyshev I, Chebyshev II, Elliptic, Cascaded, Bessel, Gaussian, Legendre
Passband ripple	0.1 dB to 10 dB
Stopband attenuation	10 dB to 100 dB
Zoom view	Allows the user to zoom in on the filter's frequency response



Lowpass filter

Filter order	2, 4, 6, 8
Low-pass corner frequency	58.63 mHz to 137.3 kHz at 305.18kHz sampling rate 7.505 Hz to 17.58 MHz at 39.063 MHz sampling rate

Highpass filter

Filter order	2, 4, 6, 8
High-pass corner frequency	723.7 mHz to 137.3 kHz at 305.18 kHz sampling rate 92.63 Hz to 17.58 MHz at 39.063 MHz sampling rate

Bandpass / bandstop filter

Filter order	2, 4
Low corner frequency	3.052 Hz to 137.3 kHz at 305.18 kHz sampling rate 390.6 Hz to 17.58 MHz at 39.063 MHz sampling rate
High corner frequency	3.442 Hz to 137.3 kHz at 305.18 kHz sampling rate 440.6 Hz to 17.58 MHz at 39.063 MHz sampling rate
Minimum bandwidth	390 mHz at 305.18 kHz sampling rate 50 Hz at 39.063 MHz sampling rate

Selecting the right IIR filter

Filter type

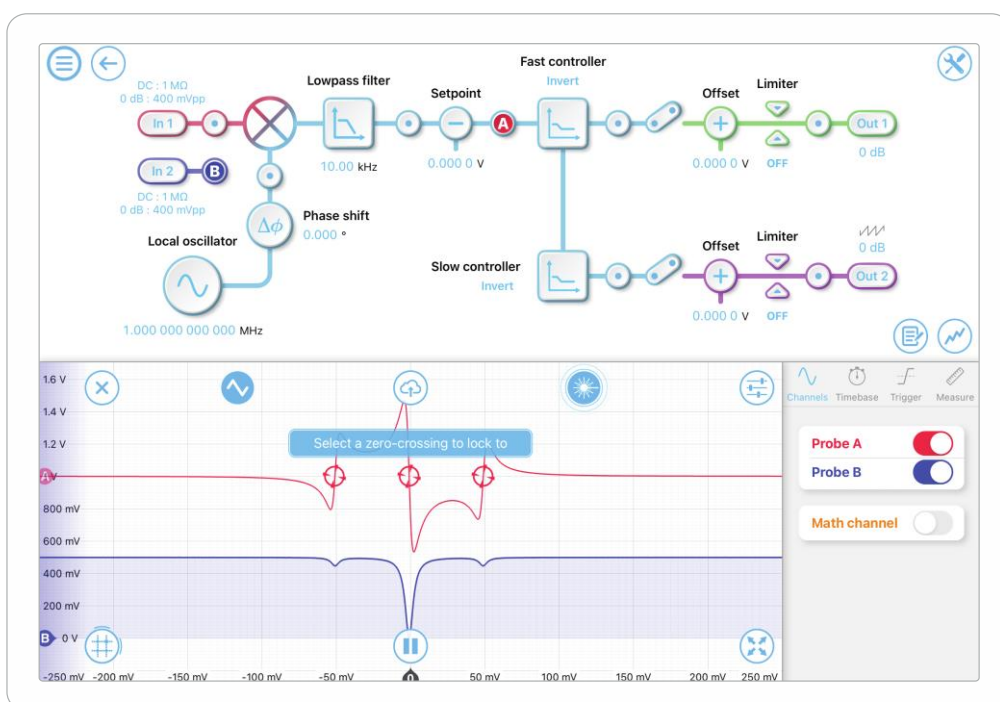
Butterworth	Butterworth filters have a maximally flat passband and a monotonic frequency response, making them a good all-around filter type suitable for most applications.
Chebyshev I	Chebyshev I filters have ripple in the passband but a sharper transition than Butterworth filters, making them useful for applications requiring aggressive stopband attenuation but can tolerate passband ripple between 0.1 dB and 10 dB.
Chebyshev II	Chebyshev II filters have ripple in the stopband but a sharper transition than Butterworth filters, making them useful in applications requiring flat passbands and aggressive stopband attenuation.
Elliptic	Elliptic (Cauer) filters have ripple in both the passband and stopband, but also have the sharpest possible transition. Elliptic filters are useful in applications requiring extremely aggressive stopband attenuation.
Cascaded	Cascaded first-order filters have zero overshoot in the time domain.
Bessel	Bessel filters have maximally flat group and phase delay in the passband, thus preserving the wave shape of passband signals.
Gaussian	Gaussian filters have the minimum possible group delay, a step response with no overshoot, and minimum rise and fall time.
Legendre	Legendre (Optimum L) filters have the sharpest possible transition while maintaining a monotonic frequency response.



Moku:Pro's Laser Lock Box

Description

Moku:Pro's Laser Lock Box enables you to lock a laser's frequency to a reference cavity or atomic transition using high-performance modulation locking techniques. The Laser Lock Box includes a "Tap-to-Lock" feature, enabling you to quickly lock to any zero-crossing on the demodulated error signal. With Multi-instrument Mode (MiM), you can deploy up to four laser lock modules simultaneously on a single Moku:Pro. Each module shares the same clock base from the internal or an external source. This is an ideal solution for multi-laser stabilization systems.



Features

- Generate modulation signals at up to 600 MHz
- Demodulate signals with internal or external local oscillators
- Scan resonances with sawtooth or triangle waveforms at up to 10 MHz
- Observe signals at different locations in the signal processing chain using an integrated oscilloscope
- Quickly lock to any zero-crossing in the error signal using the "Tap-to-Lock" feature
- Filter demodulated signals with up to fourth order infinite impulse response filters
- Individually configure high- and low-bandwidth PID controllers for fast and slow feedback



Specifications

Signal input

Signal input

Input coupling	AC / DC
Input impedance	50 Ω / 1 M Ω
Frequency range	DC to 600 MHz
Input gain ⁴	-40 dB / -20 dB / 0 dB / +24 dB / +48 dB
Gain accuracy	\pm 1%
Input range	40 V _{pp} with -40 dB input gain 4 V _{pp} with -20 dB input gain 0.4 V _{pp} with 0 dB input gain 25 mV _{pp} with +24 dB input gain ⁴ 1.6 mV with +48 dB input gain ⁴
Input noise	< 30 nV/ \sqrt Hz above 1 MHz at 400 mV _{pp} input range

Internal demodulation local oscillator

Internal reference waveform

Waveform	Sine
Frequency range	1 mHz to 600 MHz
Frequency resolution	1 μ Hz
Phase offset range	0 to 360°
Phase offset resolution	0.000001°
Output impedance	50 Ω
Can be phase-locked to external 10 MHz timebase?	Yes

External demodulation reference

Demodulation reference input

Input coupling	AC / DC
Input impedance	50 Ω / 1 M Ω
Frequency range	DC to 600 MHz
Input attenuation	40 dB / 20 dB / 0 dB
External reference modes	Direct, phase-locked loop

Phase-locked loop

PLL frequency range	1 MHz to 600 MHz (auto) 100 Hz to 600 MHz (manual)
PLL tracking bandwidth	10 kHz, 2.5 kHz, 600 Hz, 150 Hz, 40 Hz, 10 Hz

⁴ +24 dB and +48 dB input gains are applied digitally and can be used to maximize the Laser Lock Box's dynamic range for weak input signals



Phase-locked loop

Phase offset range	0 to 360°
Phase offset resolution	0.000001°
Orthogonality	90° ± 0.000,002°

Low-pass filter

Low-pass filter

Filter architecture	Infinite Impulse Response (IIR)
Filter shape	Lowpass, Bandstop or Custom
Sampling rate	78.125 MHz
Filter types	Butterworth, Chebyshev I, Chebyshev II, Elliptic, Bessel, Gaussian, Legendre
Filter order	2, 4
Min. corner frequency	2.601 kHz
Max. corner frequency	35.16 MHz
Passband ripple ⁵	0.1 dB to 10 dB
Stopband attenuation ⁶	10 dB to 100 dB

Auxiliary oscillator

Auxiliary oscillator waveform

Waveform	Sine
Frequency range	1 mHz to 300 MHz; up to 600 MHz when phase-locked to local oscillator
Frequency resolution	<1 μHz
Amplitude range (AC)	1 mV _{pp} to 10 V _{pp} into 50 Ω
Amplitude resolution	1 mV
Offset range (DC)	±1 V
Output limit (AC + DC)	±1 V with 0 dB ±5 V with 14 dB
Amplitude accuracy	1%
Output impedance	50 Ω
Can be phase-locked to demodulation local oscillator?	Yes

Scan waveform

Scanning waveform

Waveform	Sawtooth, Triangle
Frequency range	1 mHz to 10 MHz
Frequency resolution	<1 μHz

⁵ Applies to Chebyshev I and Elliptical filter types.

⁶ Applies to Chebyshev II and Elliptical filter types.



Scanning waveform

Amplitude range (AC)	1 mV _{pp} to 2 V _{pp} into 50 Ω
Amplitude resolution	1 mV
Offset range (DC)	± 1 V
Output limit (AC + DC)	± 5 V into 50 Ω
Amplitude accuracy	1%
Output impedance	50 Ω

PID Controllers

Set point

Set point range	-1 V to +1 V
Set point resolution	100 μV

Fast controller

Sampling rate	78 MHz
Proportional gain	± 60 dB
Integrator crossover frequency	312.5 mHz to 3.125 MHz. (single integrator) 988.2 mHz to 9.882 MHz (double integrator)
Int. saturation crossover frequency	3.1 Hz to 3.1 MHz
Integrator gain range	Proportional gain to +60 dB
Differentiator crossover frequency	31.25 Hz to 3.1 MHz
Diff. saturation crossover frequency	31.25 Hz to 3.125 MHz
Differentiator gain range	Proportional gain to +60 dB

Slow controller

Sampling rate	1.22 MHz
Proportional gain	± 60 dB
Integrator crossover frequency	48.83 mHz to 4.883 kHz
Int. saturation crossover frequency	48.83 mHz to 4.883 kHz
Integrator gain range	Proportional gain to +60 dB
Differentiator crossover frequency	488.3 mHz to 48.83 kHz
Diff. saturation crossover frequency	488.3 mHz to 48.83 kHz
Differentiator gain range	Proportional gain to +60 dB



Saving data

Integrated oscilloscope

Acquisition mode	Normal, Precision ⁷ , Deep memory
Maximum sampling rate	Snapshot : 1.25 GSa/s Continuous via Data Logger : 10 MSa/s
Memory depth	Normal, Precision : 16,384 pts per channel Deep memory : 16 million pts per channel with 4 channel >60 million pts with 1 channel
Averaging (linear)	Off, 2 to 100 waveforms
Persistence	Off, 100 ms to 10 s, infinite
Interpolation	Linear, SinX/X, Gaussian

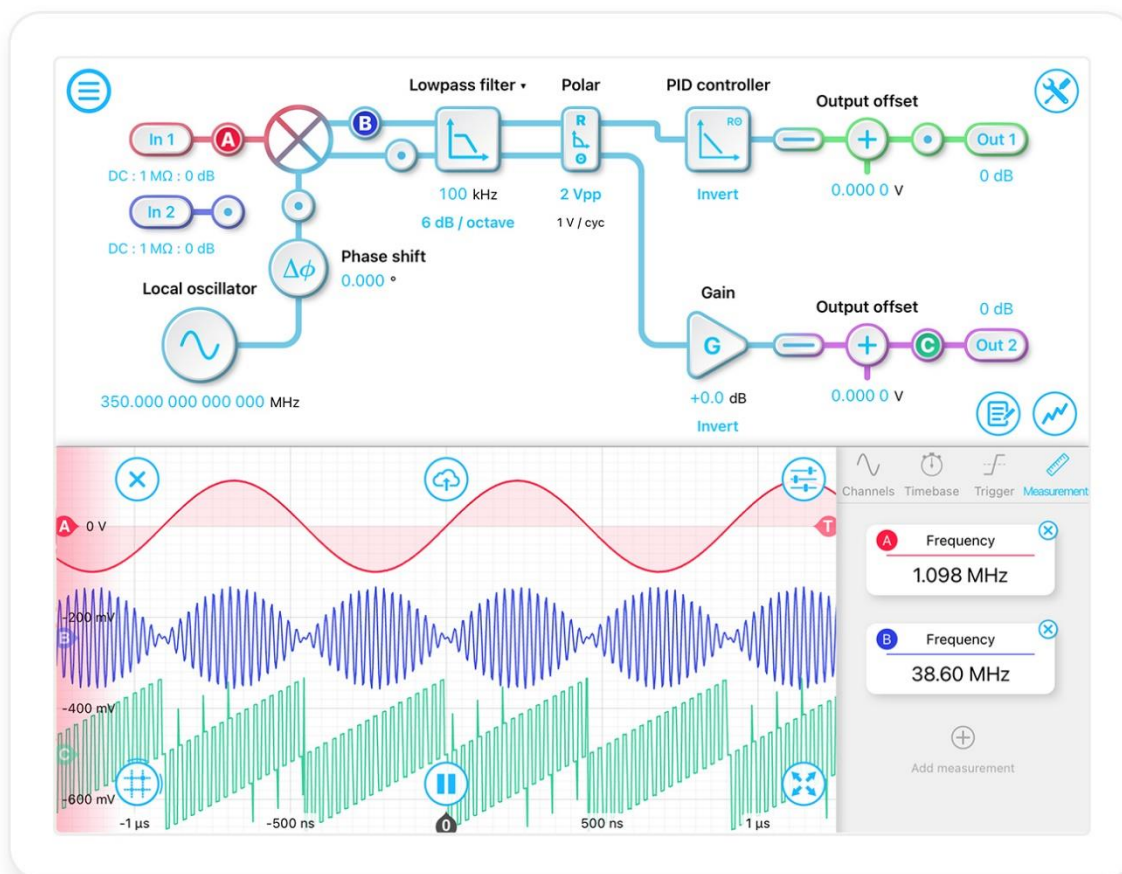
⁷ Precision mode samples the waveform at the full rate and applies a finite impulse response (FIR) lowpass filter to attenuate noise above the usable bandwidth of the measurement sampling rate and prevent aliasing.



Moku:Pro's Lock-In Amplifier

Description

Moku:Pro's digital Lock-in Amplifier supports dual-phase demodulation (XY/R θ) from 1 mHz to 600 MHz with more than 120 dB dynamic reserve. A PID controller can be placed after the demodulation stage for phase-locked loop applications. It also features an integrated 4-channel oscilloscope and data logger, enabling you to observe signals at up to 1.25 GSa/s and log data at up to 1 MSa/s.



Features

- Measure signals obscured by noise with more than 120 dB dynamic reserve
- Block diagram view of the digital signal processing chain
- Built-in probe points for signal monitoring and data logging
- Internal or external demodulation modes including a PLL (phase-locked loop)
- Toggle between rectangular (X/Y mode) or polar coordinates (R/ θ mode)
- Built-in PID Controller



Specifications

Signal channel

Signal input

Input coupling	AC / DC
Input impedance	50 Ω / 1 M Ω
AC coupling corner (-3 dB) ⁸	160 kHz into 50 Ω 16 Hz into 1 M Ω
Frequency range	DC to 600 MHz
Input attenuation	0 dB / 20 dB / 40 dB
Input range	0.4 V _{pp} with 0 dB input attenuation 4 V _{pp} with 20 dB input attenuation 40 V _{pp} with 40 dB input attenuation
Input noise	< 30 nV/ $\sqrt{\text{Hz}}$ above 10 Hz at 400 mV _{pp} input range < 200 nV/ $\sqrt{\text{Hz}}$ above 10 kHz at 400 mV _{pp} input range < 30 nV/ $\sqrt{\text{Hz}}$ above 1 MHz at 400 mV _{pp} input range

External reference

Reference input

Input coupling	AC / DC
Input impedance	50 Ω / 1 M Ω
Frequency range	DC to 600 MHz
Input attenuation	0 dB / 20 dB / 40 dB
External reference modes	Direct, phase-locked
Direct demodulation	$X = R\cos\theta$

Phase-locked loop

PLL frequency range	1 MHz to 600 MHz (auto) 100 Hz to 600 MHz (manual)
PLL tracking bandwidth	10 kHz, 2.5 kHz, 600 Hz, 150 Hz, 40 Hz, 10 Hz
Phase range	0 to 360°
Phase resolution	0.001°
Demodulation	XY / R θ

⁸ For Moku:Pro's shipped prior to April 2022, corners are 16 kHz into 50 Ω and 1.6 Hz into 1 M Ω



Internal reference

Internal reference waveforms

Waveform	Sine
Frequency range	1 mHz to 600 MHz
Frequency resolution	1 μ Hz
Phase range	0 to 360°
Phase resolution	0.001°
Demodulation	XY / R θ

Internal reference auxiliary output

Amplitude range	1 mV _{pp} to 10 V _{pp} into 50 Ω
Amplitude resolution	1 mV
Offset range	± 1 V
Output limit (AC + DC)	± 1 V with 0 dB ± 5 V with 14 dB
Amplitude accuracy	1%
Output impedance	50 Ω
Can be phase-locked to external 10 MHz timebase?	Yes

Demodulator

Demodulator characteristics

Sources	Internal reference oscillator, external direct, external with phase-locked loop
Types	Internal: XY / R θ External direct: X = Rcos θ External with PLL: XY / R θ
Filter mode	Low-pass filter
Filter cut-off frequency (-3dB)	700 mHz to 12.4 MHz
Filter time-constant	12.8 nanoseconds to 0.215 seconds
Filter slope	6, 12, 18, 24 dB per octave
Phase shift precision	0.001°
Dynamic reserve	> 120 dB

Signal output

Output characteristics

Modes	XY (cartesian mode); R θ (polar mode); Auxiliary Oscillator
Number of output channels	2
Channel 1 output	X/R
Channel 2 output	Y/ θ , auxiliary oscillator, or local oscillator



Output characteristics

Output gain mode	Direct, PID ⁹
Gain range (direct)	-80 dB to 160 dB
Phase scale (R θ mode)	1 V/cycle
Output voltage offset	± 1 V into 50 Ω
Output voltage range (AC + DC)	± 5 V into 50 Ω
Output impedance	50 Ω
D/A conversion	16-bits, 1.25 GSa/s, 500 MHz analog bandwidth

PID controller

Controller frequency range	DC to 40 MHz
Proportional gain	± 120 dB (XY mode), ± 60 dB (R θ mode)
Integrator crossover frequency	3.125 Hz to 312.5 kHz
Int. saturation crossover frequency	3.125 Hz to 312.5 kHz
Integrator gain range	Proportional gain to +120 dB (XY mode), +60 dB (R θ mode)
Differentiator crossover frequency	31.25 Hz to 3.125 MHz
Diff. saturation crossover frequency	31.25 Hz to 3.125 MHz
Differentiator gain range	Proportional gain to +120 dB (XY mode), +60 dB (R θ mode)

Saving data

Saving data

File formats	Binary: records data using a proprietary LI format. Note: data saved using the LI format must be converted to plain text using the LI file converter available here: https://www.liquidinstruments.com/resources/software-utilities/li-file-converter/
Maximum sampling rate	1 MSa/s for 1 channel 500 kSa/s for 2+ channels
Export modes	Dropbox, E-mail and iCloud, My Files (iOS 11 or later)
Delayed log start time	Up to 240 hours
Log duration	1 second up to 240 hours

⁹ Only one output may have a PID controller enabled at a time



Moku:Pro's Oscilloscope

Description

Moku:Pro's Oscilloscope features four high-speed, ultra-low noise input channels with 600 MHz analog bandwidth. An innovative blended ADC technology combines the information from 10 bit and 18 bit ADCs to cover a broad spectrum, providing class-leading input noise performance at $30\text{nV}/\sqrt{\text{Hz}}$ @ 100Hz with large dynamic range. The built-in four-channel waveform generators are capable of producing waveforms with a bandwidth of up to 500 MHz.



Features

- Four analog inputs with 600 MHz bandwidth
- Exceptional low-frequency noise performance: $30\text{ nV}/\sqrt{\text{Hz}}$ @ 100 Hz
- Dual-ADC design with blended ADC technology
- Ultra-stable 0.3 ppm onboard oscillator with 10 MHz synchronization in and out
- Integrated high-speed waveform generator channels with analog bandwidths up to 500 MHz
- Deep memory captures > 60 million samples



Specifications

Vertical characteristics

Voltage

Channels	4
Input coupling	AC / DC
Input impedance	50 Ω / 1 M Ω
Input bandwidth (-3 dB)	300 MHz / 600 MHz switchable
Input voltage range	40 V _{pp}
Input voltage noise	< 30 nV/ $\sqrt{\text{Hz}}$ above 10 Hz at 400 mV _{pp} input range < 200 nV/ $\sqrt{\text{Hz}}$ above 1 kHz at 400 mV _{pp} input range < 20 nV/ $\sqrt{\text{Hz}}$ above 100 kHz at 400 mV _{pp} input range
Channel-to-channel isolation	> 40 dB

Horizontal characteristics

Time

Time mode	Normal, Roll
Horizontal span	4 ns to 200 s

Acquisition

Acquisition mode	Normal, Precision ¹⁰ , Deep memory (> 60 million points)
Maximum sampling rate	5 GSa/s
ENOB	8
Averaging (linear)	Off, 2 to 100 waveforms
Persistence	Off, 100 ms to 10 s, infinite
Interpolation	Linear, SinX/X, Gaussian

¹⁰ Precision mode samples the waveform at the full rate and applies a finite impulse response (FIR) low-pass filter to attenuate noise above the usable bandwidth of the measurement sampling rate and prevent aliasing.



Trigger

Trigger

Trigger modes	Auto: Triggers automatically after timeout (1 second if previously triggered, 0.05 seconds otherwise) Normal: Triggers only on trigger event Single: Triggers once on a trigger event. Press the 'play' button to re-trigger
Trigger sources	Input 1, Input 2, Input 3, Input 4, Output 1, Output 2, Output 3, Output 4, External
Nth event	Trigger on the 1 st to 65,535 th event
Holdoff	3.2 ns to 10 seconds
Trigger types	Edge: Rising edge, falling edge, both edges Pulse: Positive / negative polarity <ul style="list-style-type: none">10.0 seconds > pulse width > 3.2 nanoseconds

Trigger sensitivity

Sensitivity modes	Auto: Automatically configures trigger sensitivity based on horizontal and vertical scales Select <i>Noise Reject</i> or high-frequency <i>HF Reject</i> options Manual: Manually configure trigger sensitivity
Manual modes	Relative, Absolute
Hysteresis	Relative: 0.01 div to 5.00 div Absolute: 100 μ V to 1.00 V

Measurements

Measurements

Time measurements	Frequency, period, duty cycle, positive pulse width, negative pulse width, rise time, fall time, rise rate, fall rate
Amplitude measurements	Peak-to-peak, amplitude, maximum, minimum, mean, cycle mean, RMS, cycle RMS, standard deviation, high-level, low-level, overshoot, undershoot
Math	Add, subtract, multiply, divide, XY mode, integrate, differentiate, FFT, min hold, max hold, arbitrary equation mode (using equation editor)
Visualisations	Histogram, time trend



Cursors

Maximum voltage cursors	5 per channel
Maximum time cursors	5 per channel
Voltage cursor options	Manual, track mean, track maximum, track minimum, maximum hold, minimum hold
User defined reference	A single cursor can be set as a reference for differential measurements using all other active cursors

Integrated waveform synthesizer

Synthesizer

Channels	4
Output impedance	50 Ω
Waveforms ¹¹	Sine, Square, Ramp, Pulse, DC
Output frequency range	1 mHz to 500 MHz
Output voltage range	± 5 V into 50 Ω

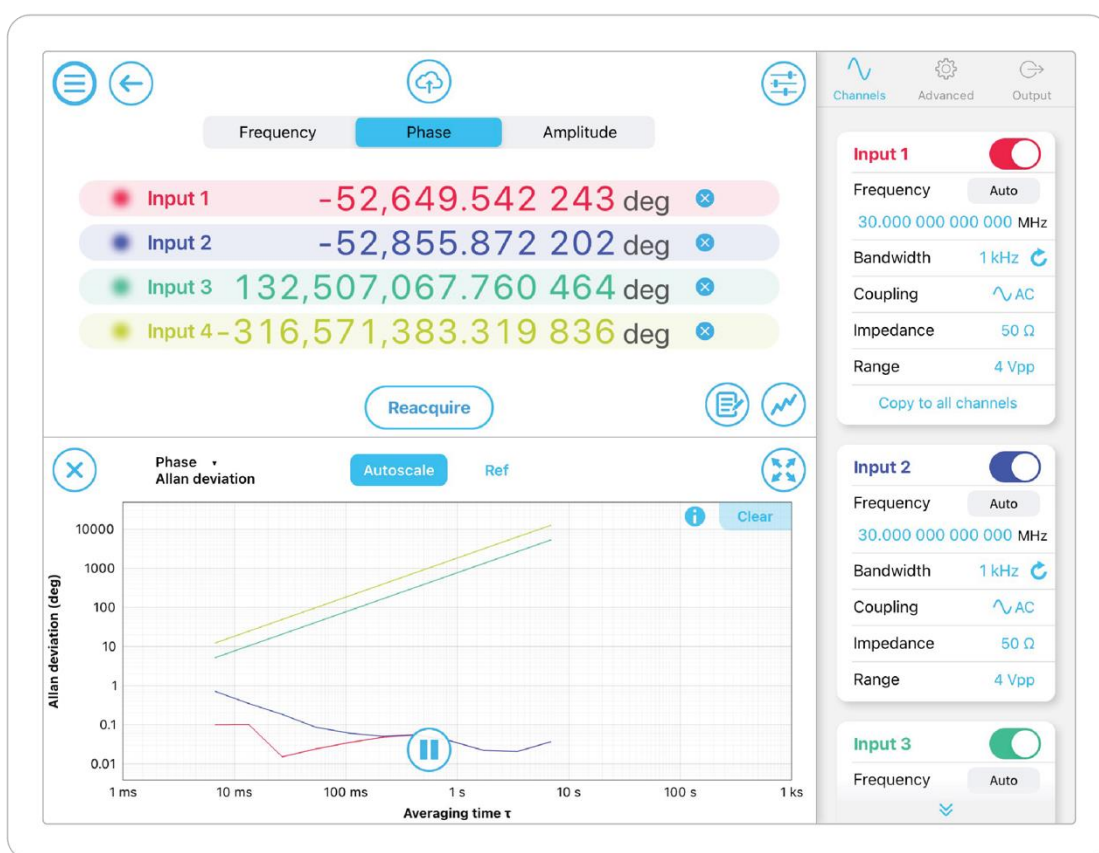
¹¹ Modulation not available for waveforms synthesized using the oscilloscope instrument.



Moku:Pro's Phasemeter

Description

Moku:Pro's Phasemeter measures phase (relative to a reference clock) of up to four input signals with better than 6 μ radian precision from 1 kHz up to 300 MHz. Based on a digitally implemented phase-locked loop architecture, Moku:Pro's Phasemeter provides exceptional dynamic range, zero deadtime, and measurement precision that exceeds the performance of conventional lock-in amplifiers and frequency counters.



Features

- Four independent phasemeter channels with output options that track and record the phase, frequency, and amplitude of four independent signals
- Phase-locked output option enables you to generate sine waves that are phase locked to the inputs
- Observe measurement data in the frequency domain using the Phasemeter's integrated spectral analysis toolkit
- Phase-locked loop tracking bandwidths from 1 Hz up to 1 MHz
- Drive measured phase to outputs with user defined mV/degree scaling and phase wrapping



Specifications

Inputs

Input characteristics

Input frequency range	1 kHz to 300 MHz
Input voltage range	0.4 V _{pp} with 0 dB input attenuation 4 V _{pp} with 20 dB input attenuation 40 V _{pp} with 40 dB input attenuation
Input impedance	50 Ω / 1 MΩ
Input coupling	AC / DC

Measurement

Measurement characteristics

Frequency set-point precision	1 μHz
Modes of operation	Auto-acquire Automatically determines input frequency for signals above 1 MHz Manual Initializes the phasemeter to a specific frequency
Tracking bandwidth	1 Hz / 10 Hz / 100 Hz / 1 kHz / 10 kHz / 100 kHz / 1 MHz (user selectable)
Advanced option	Phase wrapping, auto-reset, invert & user configurable mV/cycle output scaling

Data visualisation

Visualisations	Timeseries, Power Spectral Density, Amplitude Spectral Density, Coherence, Rayleigh Spectrum, Allan Deviation
----------------	---

Phase output

Phase output

Channels	4
Modes of operation	Directly drive measured phase to outputs
Output range	2 V _{pp} or 10 V _{pp}



Saving Data

Saving data

Logging rates	37 Sa/s, 150 Sa/s, 596 Sa/s, 2.4 kSa/s, 19.1 kSa/s, 152 kSa/s
File format	Binary: records data using a proprietary LI format for high-speed data logging. Note: data saved using the LI format must be converted to plain text using the LI file converter available here: https://www.liquidinstruments.com/resources/li-file-converter/
Export modes	Dropbox, E-mail, iCloud, My Files (iPadOS)
Delayed log start time	Up to 240 hours
Log duration	1 second up to 10000 hours

Synthesizer

Synthesizer¹²

Channels	4
Output impedance	50 Ω
Waveform shape	Sine
Output modes	Manual, phase-locked to input signal
Sampling rate	1.25 GSa/s per channel
Voltage range	± 5 V into 50 Ω

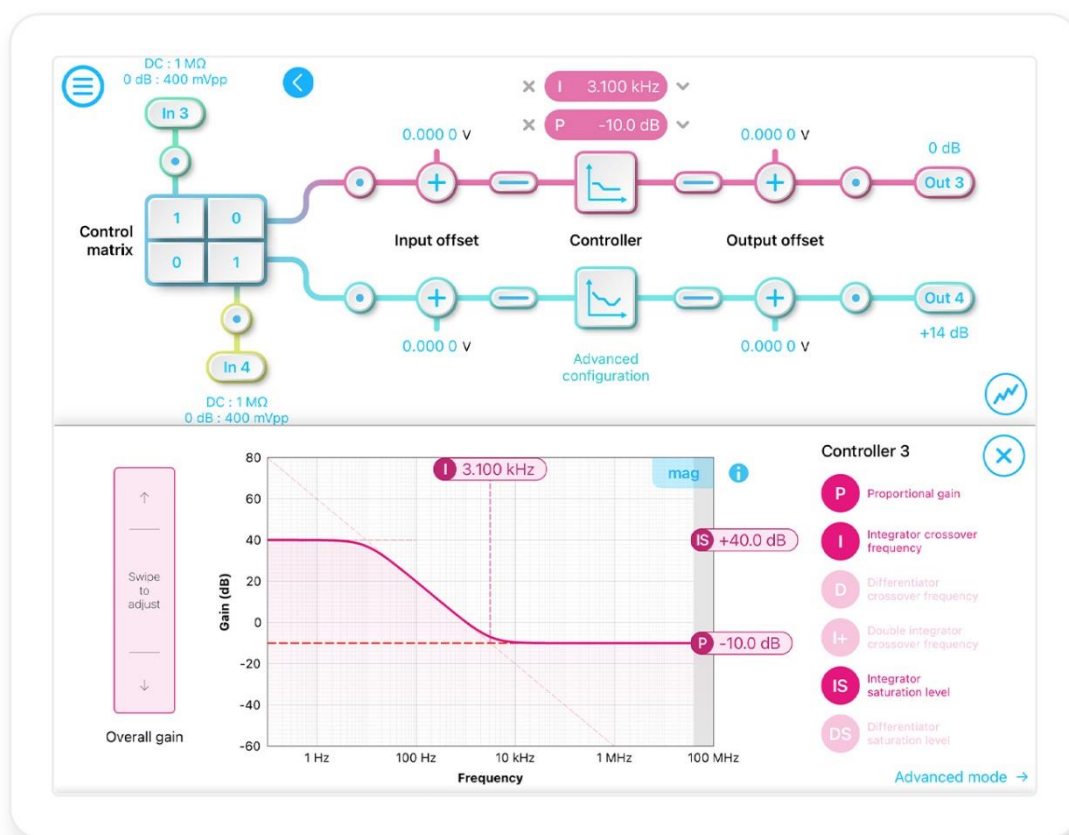
¹² Where not stated, the Phasemeter's synthesizer specifications match those of the Moku:WaveformGenerator instrument.



Moku:Pro's PID Controller

Description

Moku:Pro's PID Controller features four fully configurable PID controllers with sub-microsecond latency. This enables them to be used in applications requiring both low and high feedback bandwidths such as laser temperature and current stabilization. The PID Controller can also be used as a lead-lag compensator by saturating the integral and differential controllers with independent gain settings.



Features

- 4 input channels, 4 output channels, and 4 independent PID controllers with control matrix for MIMO
- Design the control system's frequency response using the interactive Bode plot in real time
- Block diagram view of the digital signal processing with built-in probe points in signal processing chain
- Advanced multi-section PID builder with single or double integrators and differentiators with low- and high-frequency gain saturation
- Integrated probe points for signal monitoring



Specifications

Inputs

Input characteristics

Channels	4
Input control matrix coefficients (linear gain)	-20 to +20
Input impedance	50 Ω / 1 M Ω
Input coupling	AC / DC
Input attenuation	0 dB / 20 dB / 40 dB
Input voltage range	0.4 V _{pp} into 50 Ω with 0 dB attenuation 4 V _{pp} into 50 Ω with 20 dB attenuation 40 V _{pp} into 50 Ω with 40 dB attenuation

Controller

General characteristics

Gain profiles	Proportional (P), integral (I), differential (D), double-integral (I+), integral saturation (IS), differential saturation (DS)
Maximum bandwidth	150 kHz with a phase delay of 30°
Input / output offset range	± 1 V
Offset precision	100 μ V

Gain characteristics

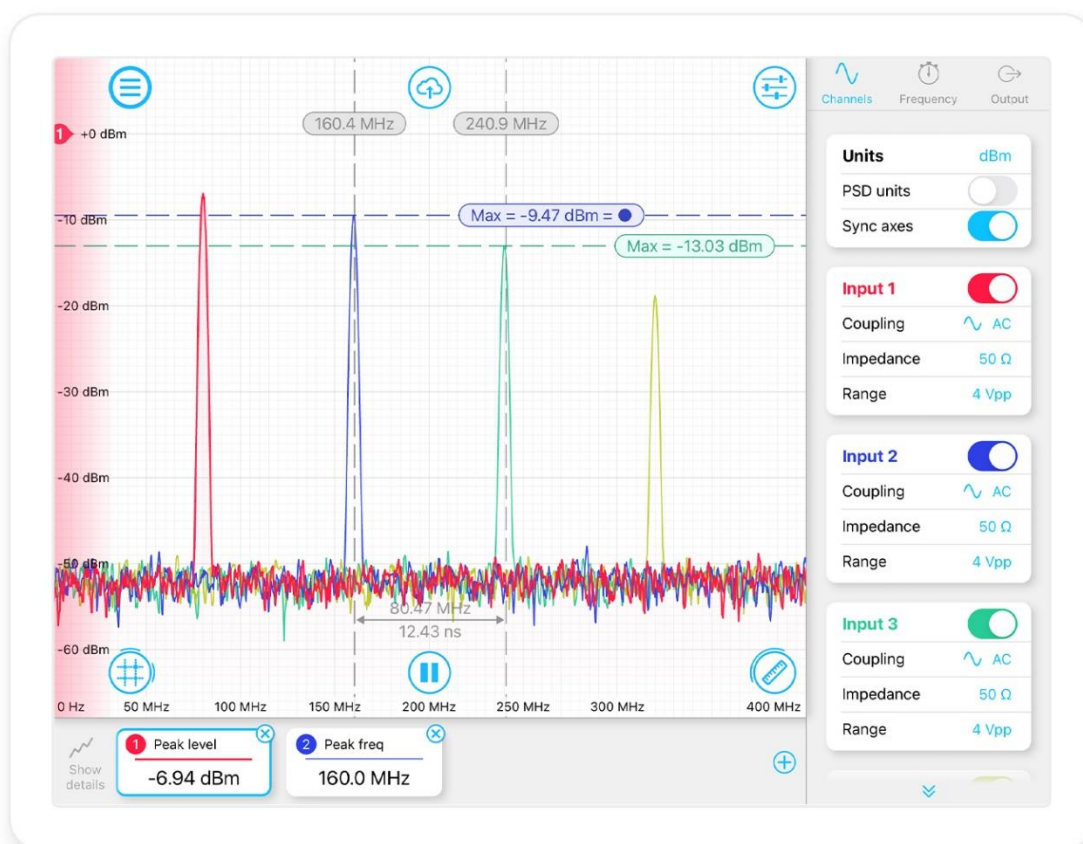
Gain profiles	Proportional (P), integral (I), differential (D), double-integral (I+), integral saturation (IS), differential saturation (DS)
Controller frequency range	DC to 40 MHz
Input / output offset range	± 1 V
Offset precision	100 μ V
Proportional gain	± 60 dB
Integrator crossover frequency	3.125 Hz to 312.5 kHz
Double integrator crossover frequency	3.125 Hz to integrator crossover frequency
Integral saturation level	Between proportional gain and +60 dB The integrator saturation crossover frequency cannot be lower than 3.125 Hz
Differentiator crossover frequency	31.25 Hz to 3.125 MHz
Differentiator saturation level	Between proportional gain and +60 dB The differentiator saturation crossover frequency cannot be higher than 3.1 MHz



Moku:Pro's Spectrum Analyzer

Description

Moku:Pro's Spectrum Analyzer allows you to observe input signals in the frequency domain between DC and 300 MHz with an ultra-low noise floor. View four channels simultaneously with a resolution bandwidth as low as 2.2 Hz and a minimum span of 100 Hz. The Spectrum Analyzer also features four 500 MHz sinewave generators.



Features

- Display and record power spectra or power spectral densities in the frequency domain from DC to 300 MHz
- Generate four sine waves up to 500 MHz using Moku:Pro's built-in analog outputs
- Quickly measure important metrics by dragging measurement cursors onto features of interest using the iPad's multi-touch interface
- Live measurement functions: peak level, peak frequency, noise level, peak SNR, and occupied bandwidth



Specifications

Frequency

Frequency

Range	DC to 300 MHz
Span	100 Hz to 300 MHz

Resolution bandwidth (RBW)

Modes	Auto	Automatically sets the RBW based on the current span and window function
	Manual	Allows the user to manually set the RBW within the limits tolerated by the span and window function
	Min	Sets the RBW at the minimum possible value for the current span and window function The minimum RBW is 2.2 Hz
Windows	None (uniform), Hanning, Flat Top, Blackman-Harris	

Amplitude

Voltage

Channels	4
Input coupling	AC / DC
Input impedance	50 Ω / 1 M Ω
Input attenuation	0 dB / 20 dB
Input bandwidth (-3 dB)	300 MHz / 600 MHz switchable
Input voltage range	0.4 V _{pp} into 50 Ω with 0 dB attenuation 4 V _{pp} into 50 Ω with 20 dB attenuation 40 V _{pp} into 50 Ω with 40 dB attenuation

Display

Scales	Volts, dBm, dBV
Display modes	Power, Power Spectral Density (PSD)
Video bandwidth (VBW)	10 Hz to 380 kHz depending on span
Averages	1 to 100
Persistence	Off, 100 ms to 10 s, infinite



Synthesizer

Synthesizer

Channels	4
Output impedance	50 Ω
Waveforms ¹³	Sine
Output frequency range	1 mHz to 500 MHz
Sweep mode	Sweeps the output frequency across the current span with a fixed sweep period of 5 seconds
Output voltage range	> 100 MHz: 2 V _{pp} into 50 Ω 1 mHz to 100 MHz: 10 V _{pp} into 50 Ω

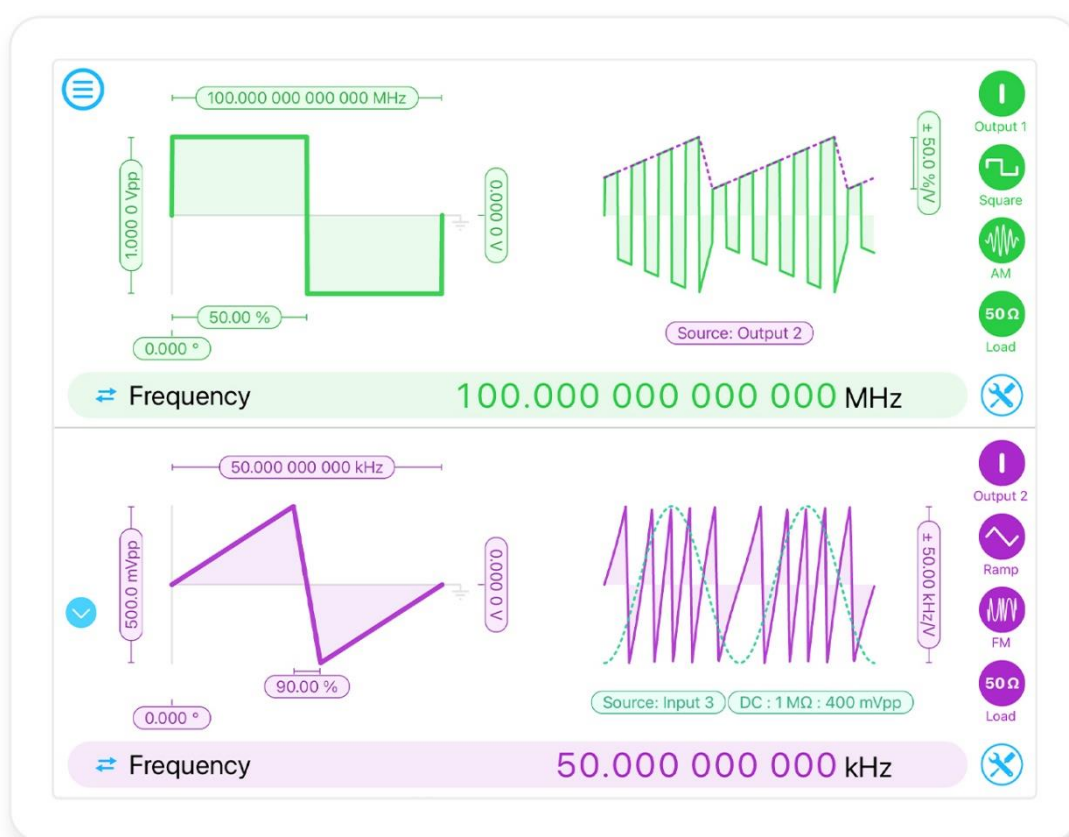
¹³ Modulation not available for waveforms synthesized using the oscilloscope instrument.



Moku:Pro's Waveform Generator

Description

Moku:Pro's Waveform Generator enables you to generate four independent waveforms with a maximum bandwidth of 500 MHz. Select between sine, square, ramp, pulsed, or DC waveform shapes. High bandwidth modulation of phase, frequency, or amplitude, or generate triggered bursts or sweeps from an internal or external source.



Features

- Generate 4 independent phase coherent waveforms from DC to 500 MHz Specifications.
- 5 built-in waveforms: sine, square, ramp, pulse, and DC.
- Broadband FM, AM, and PM modulation with internal waveform (cross-channel modulation) or external input.
- Versatile trigger options: from input, dedicated TTL trigger port, or another channel.
- 10 MHz reference input and output.



Common characteristics

Overview

Channels	4
Bandwidth (maximum output frequency)	500 MHz (2 V _{pp} into 50 Ω), 100 MHz (10 V _{pp} into 50 Ω)
Sampling rate	1.25 GSa/s per channel
Output impedance	50 Ω
Waveforms	Sine, Square, Ramp, Pulse, DC

Amplitude

Range	1 mV _{pp} to 10 V _{pp} into 50 Ω
Offset error	< 500 μV into 50 Ω
Resolution	100 μV
Units	V _{pp} , dBm

DC offset

Range (peak AC + DC)	± 5 V into 50 Ω
Resolution	100 μV

Phase offset

Range	0° to 360°
Resolution	0.001°

Waveform characteristics

Sine

Frequency range	1 mHz to 500 MHz
-----------------	------------------



Square

Frequency range	1 mHz to 150 MHz
-----------------	------------------

Ramp

Frequency range	1 mHz to 150 MHz
Symmetry ¹⁴	16% to 84% at 100 MHz 3.2% to 96.8% at 20 MHz 0.8% to 99.2% at 5 MHz

Pulse

Frequency range	1 mHz to 150 MHz
Period range	1 ks to 5 ns
Pulse width	2 ns to (period - edge time)
Edge time	2 ns to pulse width
Edge time resolution	1 ns

Modulation

Amplitude

Carrier waveforms	Sine, Square, Ramp, Pulse
Source	Internal, External
Internal modulation	Sine
Frequency	1 mHz to 125 MHz
Depth	0% to 100%

Frequency

Carrier waveforms	Sine, Square, Ramp, Pulse
Source	Internal, External
Internal modulation	Sine
Frequency	1 mHz to 125 MHz
Deviation (carrier + deviation)	1 mHz to 125 MHz

Phase

Carrier waveforms	Sine, Square, Ramp, Pulse
Source	Internal, External
Internal modulation	Sine
Frequency	DC to 125 MHz

¹⁴ Symmetry is limited by the minimum rise time of 2 ns and number of harmonics required to maintain a linearity of more than 99%.



Phase

Phase shift	0.0° to 360.0°
-------------	----------------

Burst

Modes of Operation	Start, N-Cycle, Gated
N-Cycle range	1 to 1,000,000
Trigger Sources	Ch1: Input 1, Input 2, Input 3, Input 4, Output 2, Output 3, Output 4, External, Internal Ch2: Input 1, Input 2, Input 3, Input 4, Output 1, Output 3, Output 4, External, Internal Ch3: Input 1, Input 2, Input 3, Input 4, Output 1, Output 2, Output 4, External, Internal Ch4: Input 1, Input 2, Input 3, Input 4, Output 1, Output 2, Output 3, External, Internal

Sweep

Sweep Frequency Start/End	Sine: 1 mHz to 500 MHz Square, Ramp, Pulse: 1 mHz to 200 MHz
Sweep Time	1 ms to 1 ks
Trigger Sources	Ch1: Input 1, Input 2, Input 3, Input 4, Output 2, Output 3, Output 4, External, Internal Ch2: Input 1, Input 2, Input 3, Input 4, Output 1, Output 3, Output 4, External, Internal Ch3: Input 1, Input 2, Input 3, Input 4, Output 1, Output 2, Output 4, External, Internal Ch4: Input 1, Input 2, Input 3, Input 4, Output 1, Output 2, Output 3, External, Internal
Nominal Trigger Level	Input Channel: 1.8 V Output Channel: 0.5 V External: 1.2 V



Moku:Pro's Multi-Instrument Mode



Description

Moku:Pro's Multi-Instrument Mode enables you to deploy up to 4 instruments and operate them simultaneously. These instruments can exchange high-speed, low latency signals between themselves in the digital domain at 5 Gb/s. Source signals from the real world via the blended ADCs and drive signals to the real world via the high-speed digital-to-analog converters. Connect instrument slots to build customized signal processing chains, or drop a custom configuration in one slot with Moku Cloud Compile.



Features

- Configure 4 independent instruments, operating simultaneously
- Each of the instrument slots has 2 inputs & 2 outputs
- Flexible multiplexing allows all 4 slots to access all 4 ADC inputs and all 4 DAC outputs
- High speed, 5 Gb/s inter-instrument communication with drag and drop setup
- Configurable input and output ranges, one touch slot synchronization



Common characteristics

Overview

Instruments	Up to 4, each with 2 inputs and 2 outputs
Inputs / outputs	4 analog inputs, 4 analog outputs
Input ranges	400 mVpp, 4 Vpp, 40 Vpp
Input bandwidth	300 MHz
Input sampling rate	1.25 GSa/s per channel
Input impedance	50 Ω / 1 M Ω
Output ranges	2 Vpp, 10 Vpp into 50 Ω
Output bandwidth	500 MHz at 2 Vpp, 100 MHz at 10 Vpp
Output sampling rate	1.25 GSa/s per channel
Output impedance	50 Ω

Instrument slot

Inter-slot communication	2 channels, each at 64 bits @ 312.5 MHz / 20 Gb/s
Available instruments	Arbitrary Waveform Generator Data Logger Digital Filter Box Frequency Response Analyzer Laser Lock Box Lock-in Amplifier Oscilloscope Phasemeter PID Controller Spectrum Analyzer Waveform Generator Moku Cloud Compile



This information is subject to change without notice.

© 2022 Liquid Instruments. All rights reserved.