

Extended Contact Ball Slide Goniometers

Stage Size 40 × 40 mm

GOHT-40A

RoHS

High precision goniometers with integrated bearing ways for superior stiffness, accuracy and durability.

- Centering accuracy 10x better than typical dovetail goniometers.
- Designed for use in a variety of orientations. Not limited to horizontal mounting.
- Integral-guide structure offers high performance of rotation center displacement $\phi 0.007$ mm.
- Disc clamp improves the stability of clamping.
- Designed for use with precision alignment pins for ease of assembly.



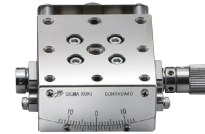
Guide

- ▶ Attachment pins (GOHT-AP) can be purchased separately.
[Reference](#) E010 [Catalog Code](#) W7112
- ▶ Can be shipped as a preassembled $\alpha\beta$ two axis stack.
[WEB Reference](#) [Catalog Code](#) W7104
- ▶ Contact our Sales Division for information about custom center heights.
- ▶ Motorized version (OSMS-40A**) also available.
[Reference](#) G090 [Catalog Code](#) W9070



OSMS-40A**

- ▶ For the surface finishing, the white coating of electroless nickel plating is also available. [WEB Reference](#) [Catalog Code](#) W7092



Attention

- ▶ Locking mechanism is operated using thumbscrew on side of stage.

Specifications

Part Number	METRIC	GOHT-40A20B	GOHT-40A40B	GOHT-40A60B	GOHT-40A75B
	INCH	GOHT-40A20BUU	GOHT-40A40BUU	GOHT-40A60BUU	GOHT-40A75BUU
(Opposite Model)	METRIC	GOHT-40A20BR	GOHT-40A40BR	GOHT-40A60BR	GOHT-40A75BR
	INCH	GOHT-40A20BRUU	GOHT-40A40BRUU	GOHT-40A60BRUU	GOHT-40A75BRUU
Stage Size [mm]		40×40	40×40	40×40	40×40
Axes of Travel		α axis			
Rotation Center Height [mm]		20±0.1	40±0.1	60±0.1	75±0.1
Angle Range [°]		±20	±10	±8	±6
Vernier Readable Resolution		0.1°	0.1°	0.1°	0.1°
Travel per Knob Rotation [°]		about 2.34	about 1.41	about 1.08	about 0.89
Rotation Center Displacement [mm]		$\phi 0.007$ or less	$\phi 0.007$ or less	$\phi 0.007$ or less	$\phi 0.007$ or less
Guide Method		Extended contact ball bearing guide			
Primary Material		SUS440C quench hardened			
Finish		Super black chrome			
Load Capacity [N]		58.8 (6.0kgf)	58.8 (6.0kgf)	58.8 (6.0kgf)	58.8 (6.0kgf)
Max. Moment Capacity	Pitch [N·m]	2.0	2.0	2.0	2.0
	Roll [N·m]	3.0	3.0	3.0	3.0
	Yaw [N·m]	2.0	2.0	2.0	2.0
Moment Stiffness	Roll ["/N·cm]	0.6	0.6	0.6	0.6
	Yaw ["/N·cm]	0.6	0.6	0.6	0.6
Parallelism [μ m]		30	30	30	30
Weight [kg]		0.2	0.2	0.2	0.2

Application Systems

Optics & Optical Coatings

Opto-Mechanics

Bases

Manual Stages

Actuators & Adjusters

Motorized Stages

Light Sources & Laser Safety

Index

Guide

X Axis Stages

XY Axis Stages

Z Axis Stages

XZ Axis Stages

XYZ Axis Stages

Rotation Stages

Goniometer

Tilt Stages

Vacuum

Ball Bearing Guide

Crossed Roller

Dovetail

Lapping

V Groove Screw

Others

15 × 15 mm

25 × 25 mm

40 × 40 mm

60 × 60 mm

65 × 65 mm

80 × 80 mm

100 × 100 mm

120 × 120 mm

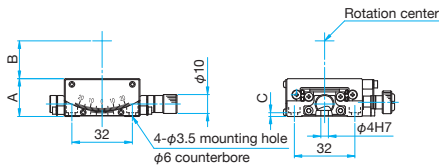
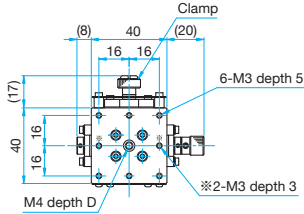
Others



Outline Drawing

GOHT-40A* *B

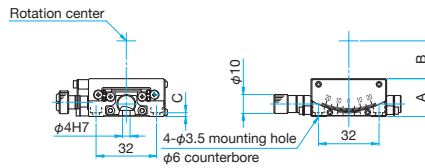
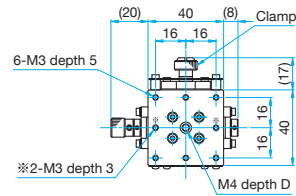
Hexagon socket head cap screw (stainless steel construction) M3x6...4 screws
Attachment pin for M4...1 pin



Part Number	A (mm)	B (mm)	C (mm)	D (mm)
GOHT-40A20B	20	20	2	4
GOHT-40A40B	20	40	1.5	4
GOHT-40A60B	15	60	1	3
GOHT-40A75B	15	75	1	3

GOHT-40A* *BR

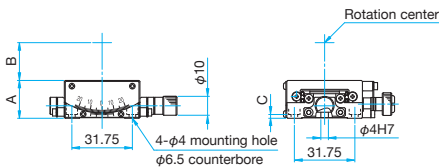
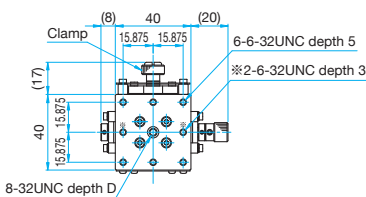
Hexagon socket head cap screw (stainless steel construction) M3x6...4 screws
Attachment pin for M4...1 pin



Part Number	A (mm)	B (mm)	C (mm)	D (mm)
GOHT-40A20BR	20	20	2	4
GOHT-40A40BR	20	40	1.5	4
GOHT-40A60BR	15	60	1	3
GOHT-40A75BR	15	75	1	3

GOHT-40A* *BUU

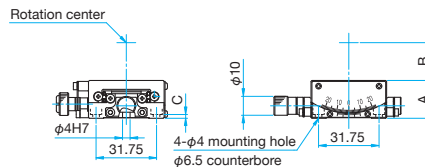
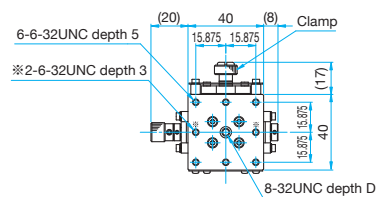
Low head hexagon socket head cap screw (stainless steel construction)
6-32UNCx1/4...4 screws, Attachment pin for 8-32UNC...1 pin



Part Number	A (mm)	B (mm)	C (mm)	D (mm)
GOHT-40A20BUU	20	20	2	4
GOHT-40A40BUU	20	40	1.5	4
GOHT-40A60BUU	15	60	1	3
GOHT-40A75BUU	15	75	1	3

GOHT-40A* *BRUU

Low head hexagon socket head cap screw (stainless steel construction)
6-32UNCx1/4...4 screws, Attachment pin for 8-32UNC...1 pin



Part Number	A (mm)	B (mm)	C (mm)	D (mm)
GOHT-40A20BRUU	20	20	2	4
GOHT-40A40BRUU	20	40	1.5	4
GOHT-40A60BRUU	15	60	1	3
GOHT-40A75BRUU	15	75	1	3

Application Systems

Optics & Optical Coatings

Opto-Mechanics

Bases

Manual Stages

Actuators & Adjusters

MotORIZED Stages

Light Sources & Laser Safety

Index

Guide

X Axis Stages

XY Axis Stages

Z Axis Stages

XZ Axis Stages

XYZ Axis Stages

Rotation Stages

Goniometer

Tilt Stages

Vacuum

Ball Bearing Guide

Crossed Roller

Dovetail

Lapping

V Groove Screw

Ohters

15 × 15 mm

25 × 25 mm

40 × 40 mm

60 × 60 mm

65 × 65 mm

80 × 80 mm

100 × 100 mm

120 × 120 mm

Others

Extended Contact Ball Slide Goniometers

$\alpha\beta$ Axis Extended Contact Ball Slide Goniometers

GOHT-60A
GOHT-60B

Stage Size 60 × 60 mm

RoHS
RoHS

High precision goniometers with integrated bearing ways for superior stiffness, accuracy and durability.

- Centering accuracy 10x better than typical dovetail goniometers.
- Designed for use in a variety of orientations. Not limited to horizontal mounting.
- Integral-guide structure offers high performance of rotation center displacement $\phi 0.007$ mm.
- Disc clamp improves the stability of clamping.
- Designed for use with precision alignment pins for ease of assembly.



Attention

- ▶ Locking mechanism is operated using thumbscrew on side of stage.

Guide

- ▶ Attachment pins (GOHT-AP) can be purchased separately.
[Reference](#) E010 [Catalog Code](#) W7112
- ▶ Contact our Sales Division for information about custom center heights.
- ▶ Motorized version (OSMS-60***) also available.



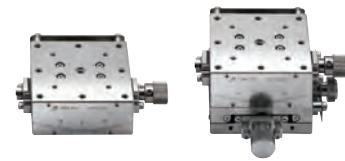
OSMS-60A**
[Reference](#) G092
[Catalog Code](#) W9080



OSMS-60B**
[Reference](#) G094 [Catalog Code](#) W9098

- ▶ For the surface finishing, the white coating of electroless nickel plating is also available.

[WEB Reference](#) [Catalog Code](#) W7093(α axis), W7105($\alpha\beta$ axis)



α axis

$\alpha\beta$ axis

Specifications								
Part Number	METRIC	GOHT-60A35B	GOHT-60A60B	GOHT-60A85B	GOHT-60A105B	GOHT-60B35B	GOHT-60B60B	GOHT-60B85B
(Opposite Model)	METRIC	GOHT-60A35BR	GOHT-60A60BR	GOHT-60A85BR	GOHT-60A105BR	GOHT-60B35BR	GOHT-60B60BR	GOHT-60B85BR
Stage Size [mm]		60×60	60×60	60×60	60×60	60×60	60×60	60×60
Axes of Travel		α axis				$\alpha\beta$ axis		
Rotation Center Height [mm]		35±0.1	60±0.1	85±0.1	105±0.1	35±0.2	60±0.2	85±0.2
Angle Range [°]	(Upper) β axis	—	—	—	—	±20	±15	±10
	(Lower) α axis	±20	±15	±10	±8	±15	±10	±8
Vernier Readable Resolution		0.1°	0.1°	0.1°	0.1°	0.1°	0.1°	0.1°
Travel per Knob Rotation [°]	(Upper) β axis	—	—	—	—	about 2.2	about 1.46	about 1.15
	(Lower) α axis	about 2.2	about 1.46	about 1.15	about 0.95	about 1.46	about 1.15	about 0.95
Rotation Center Displacement [mm]		$\phi 0.007$ or less	$\phi 0.007$ or less	$\phi 0.007$ or less	$\phi 0.007$ or less	$\phi 0.007$ or less	$\phi 0.007$ or less	$\phi 0.007$ or less
Guide Method		Extended contact ball bearing guide						
Primary Material		SUS440C quench hardened						
Finish		Super black chrome						
Load Capacity [N]		98 (10.0kgf)	98 (10.0kgf)	98 (10.0kgf)	98 (10.0kgf)	98 (10.0kgf)	98 (10.0kgf)	98 (10.0kgf)
Max. Moment Capacity	Pitch [N·m]	3.0	3.0	3.0	3.0	3.0	3.0	3.0
	Roll [N·m]	6.0	6.0	6.0	6.0	3.0	3.0	3.0
	Yaw [N·m]	3.0	3.0	3.0	3.0	3.0	3.0	3.0
Moment Stiffness	Roll [°/N·cm]	0.25	0.25	0.25	0.25	—	—	—
	Yaw [°/N·cm]	0.1	0.1	0.1	0.1	—	—	—
Parallelism [μ m]		30	30	30	30	30	30	30
Weight [kg]		0.6	0.6	0.6	0.6	1.2	1.2	1.2

Application Systems

Optics & Optical Coatings

Opto-Mechanics

Bases

Manual Stages

Actuators & Adjusters

Motorized Stages

Light Sources & Laser Safety

Index

Guide

X Axis Stages

XY Axis Stages

Z Axis Stages

XZ Axis Stages

XYZ Axis Stages

Rotation Stages

Goniometer

Tilt Stages

Vacuum

Ball Bearing Guide

Crossed Roller

Dovetail

Lapping

V Groove Screw

Others

15 × 15 mm

25 × 25 mm

40 × 40 mm

60 × 60 mm

65 × 65 mm

80 × 80 mm

100 × 100 mm

120 × 120 mm

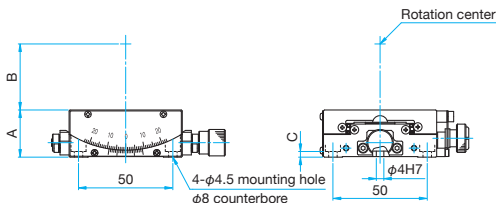
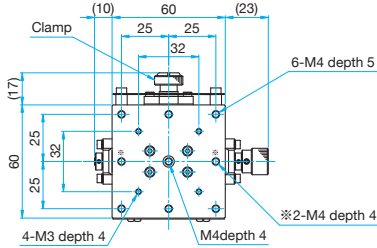
Others



Outline Drawing

GOHT-60A**B

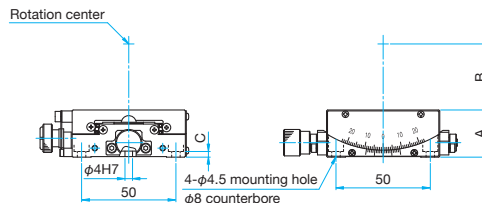
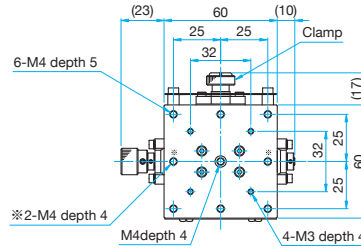
Hexagon socket head cap screw (stainless steel construction) M4x8...4 screws, Attachment pins for M4...1 pin



Part Number	A (mm)	B (mm)	C (mm)
GOHT-60A35B	25	35	3
GOHT-60A60B	25	60	3
GOHT-60A85B	20	85	2
GOHT-60A105B	20	105	2

GOHT-60A**BR

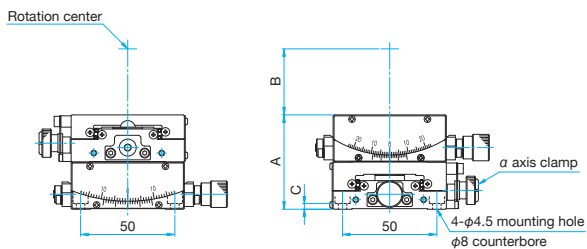
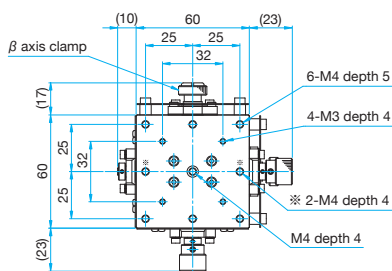
Hexagon socket head cap screw (stainless steel construction) M4x8...4 screws, Attachment pins for M4...1 pin



Part Number	A (mm)	B (mm)	C (mm)
GOHT-60A35BR	25	35	3
GOHT-60A60BR	25	60	3
GOHT-60A85BR	20	85	2
GOHT-60A105BR	20	105	2

GOHT-60B**B

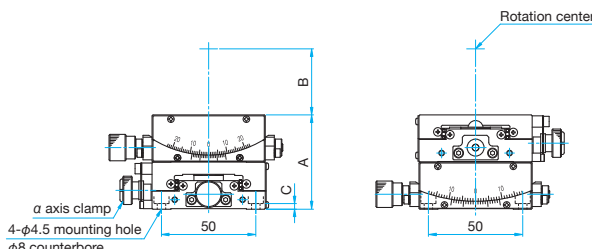
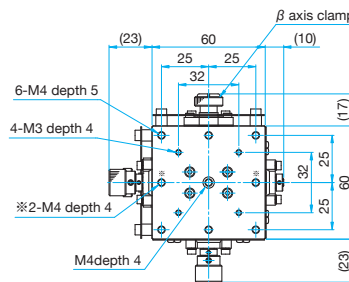
Hexagon socket head cap screw (stainless steel construction) M4x8...4 screws, Attachment pins for M4...1 pin



Part Number	A (mm)	B (mm)	C (mm)
GOHT-60B35B	50	35	3
GOHT-60B60B	45	60	2
GOHT-60B85B	40	85	2

GOHT-60B**BR

Hexagon socket head cap screw (stainless steel construction) M4x8...4 screws, Attachment pins for M4...1 pin



Part Number	A (mm)	B (mm)	C (mm)
GOHT-60B35BR	50	35	3
GOHT-60B60BR	45	60	2
GOHT-60B85BR	40	85	2

Application Systems

Optics & Optical Coatings

Opto-Mechanics

Bases

Manual Stages

Actuators & Adjusters

MotORIZED Stages

Light Sources & Laser Safety

Index

Guide

X Axis Stages

XY Axis Stages

Z Axis Stages

XZ Axis Stages

XYZ Axis Stages

Rotation Stages

Goniometer

Tilt Stages

Vacuum

Ball Bearing Guide

Crossed Roller

Dovetail

Lapping

V Groove Screw

Ohters

15 × 15 mm

25 × 25 mm

40 × 40 mm

60 × 60 mm

65 × 65 mm

80 × 80 mm

100 × 100 mm

120 × 120 mm

Others

Extended Contact Ball Slide Goniometers

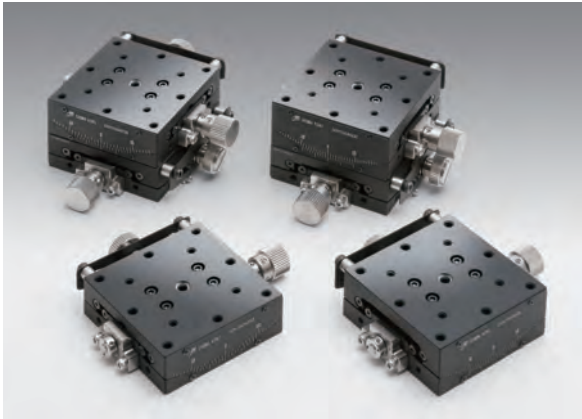
$\alpha\beta$ Axis Extended Contact Ball Slide Goniometers

GOHT-65A Stage Size 65 x 65 mm
GOHT-65B

RoHS
RoHS

High precision goniometers with integrated bearing ways for superior stiffness, accuracy and durability.

- Centering accuracy 10x better than typical dovetail goniometers.
- Designed for use in a variety of orientations. Not limited to horizontal mounting.
- Integral-guide structure offers high performance of rotation center displacement $\phi 0.007$ mm.
- Disc clamp improves the stability of clamping.
- Designed for use with precision alignment pins for ease of assembly.



Guide

- ▶ Attachment pins (GOHT-AP) can be purchased separately.
[Reference](#) E010 [Catalog Code](#) W7112
- ▶ Contact our Sales Division for information about custom center heights.

Attention

- ▶ Locking mechanism is operated using thumbscrew on side of stage.

Specifications

Part Number	METRIC	GOHT-65A50B-M6	GOHT-65A75B-M6	GOHT-65A100B-M6	GOHT-65B50B-M6	GOHT-65B75B-M6
	INCH	GOHT-65A50BUU	GOHT-65A75BUU	GOHT-65A100BUU	GOHT-65B50BUU	GOHT-65B75BUU
(Opposite Model)	METRIC	GOHT-65A50BR-M6	GOHT-65A75BR-M6	GOHT-65A100BR-M6	GOHT-65B50BR-M6	GOHT-65B75BR-M6
	INCH	GOHT-65A50BRUU	GOHT-65A75BRUU	GOHT-65A100BRUU	GOHT-65B50BRUU	GOHT-65B75BRUU
Stage Size [mm]		65×65	65×65	65×65	65×65	65×65
Axes of Travel		α axis			$\alpha\beta$ axis	
Rotation Center Height [mm]		50±0.1	75±0.1	100±0.1	50±0.2	75±0.2
Angle Range [°]	(Upper) β axis	—	—	—	±20	±15
	(Lower) α axis	±20	±15	±10	±15	±10
Vernier Readable Resolution		0.1°	0.1°	0.1°	0.1°	0.1°
Travel per Knob Rotation [°]	(Upper) β axis	—	—	—	about 1.70	about 1.22
	(Lower) α axis	about 1.70	about 1.22	about 0.95	about 1.22	about 0.95
Rotation Center Displacement [mm]		$\phi 0.007$ or less	$\phi 0.007$ or less	$\phi 0.007$ or less	$\phi 0.007$ or less	$\phi 0.007$ or less
Guide Method		Extended contact ball bearing guide				
Primary Material		SUS440C quench hardened				
Finish		Super black chrome				
Load Capacity [N]		98 (10kgf)	98 (10kgf)	98 (10kgf)	98 (10kgf)	98 (10kgf)
Max. Moment Capacity	Pitch [N·m]	3.5	3.5	3.5	3.5	3.5
	Roll [N·m]	6.5	6.5	6.5	3.5	3.5
	Yaw [N·m]	3.5	3.5	3.5	3.5	3.5
Moment Stiffness	Roll [°/N·cm]	0.3	0.3	0.3	—	—
	Yaw [°/N·cm]	0.3	0.3	0.3	—	—
Parallelism [μ m]		30	30	30	30.0	30.0
Weight [kg]		0.75	0.75	0.75	1.5	1.5

Application Systems

Optics & Optical Coatings

Opto-Mechanics

Bases

Manual Stages

Actuators & Adjusters

Motorized Stages

Light Sources & Laser Safety

Index

Guide

X Axis Stages

XY Axis Stages

Z Axis Stages

XZ Axis Stages

XYZ Axis Stages

Rotation Stages

Goniometer

Tilt Stages

Vacuum

Ball Bearing Guide

Crossed Roller

Dovetail

Lapping

V Groove Screw

Others

15 × 15 mm

25 × 25 mm

40 × 40 mm

60 × 60 mm

65 × 65 mm

80 × 80 mm

100 × 100 mm

120 × 120 mm

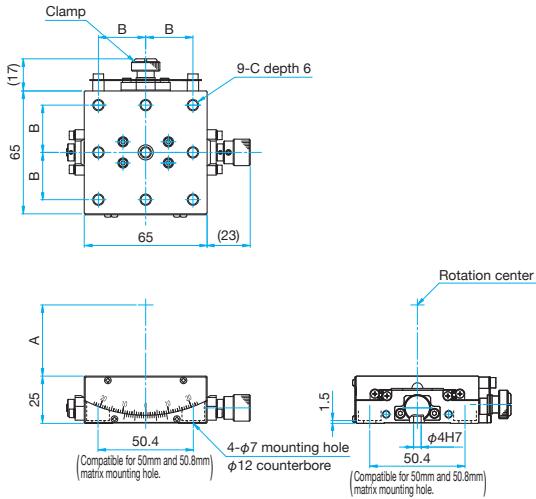
Others



Outline Drawing

GOHT-65AB-M6/65A**BUU**

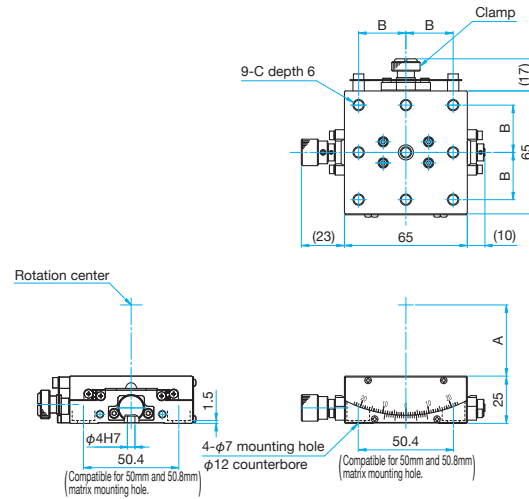
- Low head hexagon socket head cap screw (stainless steel construction) M6×6...4 screws, Attachment pins for M6...1 pin (M6)
- Low head hexagon socket head cap screw (stainless steel construction) 1/4-20UNC×1/4...4 screws, Attachment pins for 1/4-20UNC...1 pin (UU)



Part Number	A (mm)	B (mm)	C
GOHT-65A50B-M6	50	25	M6 P1
GOHT-65A50BUU	50	25.4	1/4-20UNC
GOHT-65A75B-M6	75	25	M6 P1
GOHT-65A75BUU	75	25.4	1/4-20UNC
GOHT-65A100B-M6	100	25	M6 P1
GOHT-65A100BUU	100	25.4	1/4-20UNC

GOHT-65ABR-M6/65A**BRUU**

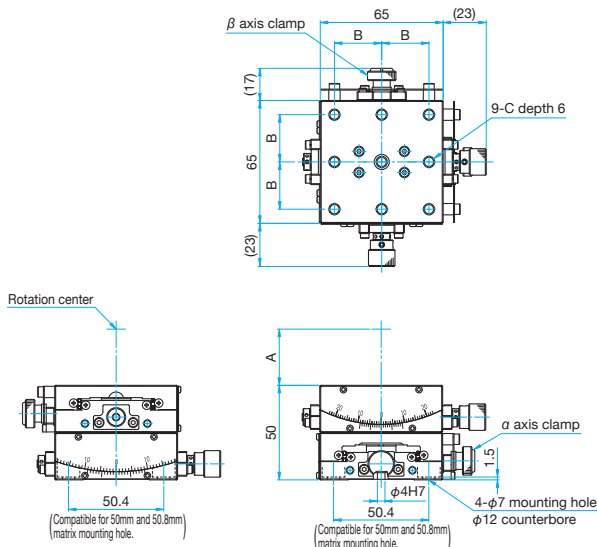
- Low head hexagon socket head cap screw (stainless steel construction) M6×6...4 screws, Attachment pins for M6...1 pin (M6)
- Low head hexagon socket head cap screw (stainless steel construction) 1/4-20UNC×1/4...4 screws, Attachment pins for 1/4-20UNC...1 pin (UU)



Part Number	A (mm)	B (mm)	C
GOHT-65A50BR-M6	50	25	M6 P1
GOHT-65A50BRUU	50	25.4	1/4-20UNC
GOHT-65A75BR-M6	75	25	M6 P1
GOHT-65A75BRUU	75	25.4	1/4-20UNC
GOHT-65A100BR-M6	100	25	M6 P1
GOHT-65A100BRUU	100	25.4	1/4-20UNC

GOHT-65BB-M6/65B**BUU**

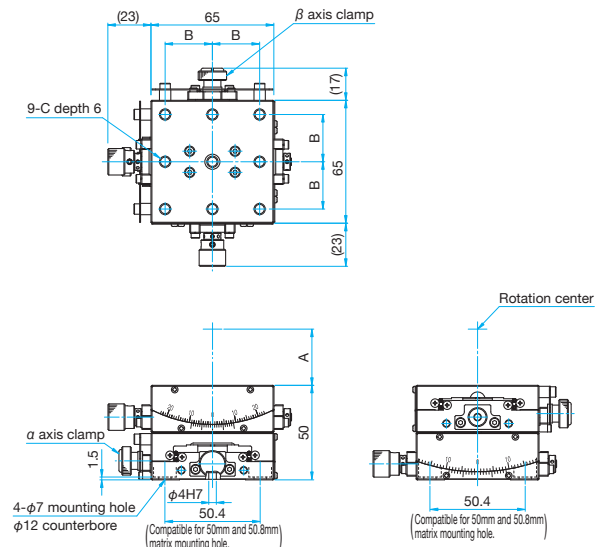
- Low head hexagon socket head cap screw (stainless steel construction) M6×6...4 screws, Attachment pins for M6...1 pin (M6)
- Low head hexagon socket head cap screw (stainless steel construction) 1/4-20UNC×1/4...4 screws, Attachment pins for 1/4-20UNC...1 pin (UU)



Part Number	A (mm)	B (mm)	C
GOHT-65B50B-M6	50	25	M6 P1
GOHT-65B50BUU	50	25.4	1/4-20UNC
GOHT-65B75B-M6	75	25	M6 P1
GOHT-65B75BUU	75	25.4	1/4-20UNC

GOHT-65BBR-M6/65B**BRUU**

- Low head hexagon socket head cap screw (stainless steel construction) M6×6...4 screws, Attachment pins for M6...1 pin (M6)
- Low head hexagon socket head cap screw (stainless steel construction) 1/4-20UNC×1/4...4 screws, Attachment pins for 1/4-20UNC...1 pin (UU)



Part Number	A (mm)	B (mm)	C
GOHT-65B50BR-M6	50	25	M6 P1
GOHT-65B50BRUU	50	25.4	1/4-20UNC
GOHT-65B75BR-M6	75	25	M6 P1
GOHT-65B75BRUU	75	25.4	1/4-20UNC

Application Systems

Optics & Optical Coatings

Opto-Mechanics

Bases

Manual Stages

Actuators & Adjusters

Motoeized Stages

Light Sources & Laser Safety

Index

Guide

X Axis Stages

XY Axis Stages

Z Axis Stages

XZ Axis Stages

XYZ Axis Stages

Rotation Stages

Goniometer

Tilt Stages

Vacuum

Ball Bearing Guide

Crossed Roller

Dovetail

Lapping

V Groove Screw

Ohters

15 × 15 mm

25 × 25 mm

40 × 40 mm

60 × 60 mm

65 × 65 mm

80 × 80 mm

100 × 100 mm

120 × 120 mm

Others

Extended Contact Micrometer Goniometers

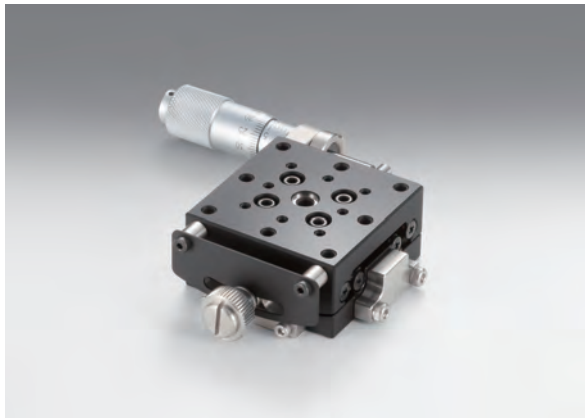
Stage Size 40 × 40 mm

GOHT-40A-S

RoHS

High precision goniometers with integrated bearing ways for superior stiffness, accuracy and durability.

- Integrated Extended Contact Bearing Ways for simpler construction, higher load and durability, and lower cost.
- Centering accuracy 10x better than typical dovetail goniometers.
- Designed for use in a variety of orientations. Not limited to horizontal mounting.
- Designed for use with precision alignment pins for ease of assembly.



Guide

- ▶ Attachment pins (GOHT-AP) can be purchased separately.
[Reference](#) E010 [Catalog Code](#) W7112
- ▶ Contact our sales team for information about custom center heights.
- ▶ Motorized version (OSMS-40A***) also available.
[Reference](#) G090 [Catalog Code](#) W9079

Attention

- ▶ Locking mechanism is operated using thumbscrew on side of stage.
- ▶ When assembled to an $\alpha\beta$ axis stage, the micrometer head of the α axis stage interferes. Please contact our Sales Division for more information.

Specifications					
Part Number	METRIC	GOHT-40A20BMS	GOHT-40A40BMS	GOHT-40A60BMS	GOHT-40A75BMS
	INCH	GOHT-40A20BMSUU	GOHT-40A40BMSUU	GOHT-40A60BMSUU	GOHT-40A75BMSUU
(Opposite Model)	METRIC	GOHT-40A20BMSR	GOHT-40A40BMSR	GOHT-40A60BMSR	GOHT-40A75BMSR
	INCH	GOHT-40A20BMSRUU	GOHT-40A40BMSRUU	GOHT-40A60BMSRUU	GOHT-40A75BMSRUU
Stage Size [mm]		40×40	40×40	40×40	40×40
Axes of Travel		α axis			
Micrometer Position		Side	Side	Side	Side
Rotation Center Height [mm]		20±0.1	40±0.1	60±0.1	75±0.1
Angle Range [°]		±11	±7	±5.5	±4.5
Travel per Knob Rotation [°]		about 0.9	about 0.55	about 0.42	about 0.35
Rotation Center Displacement [mm]		φ0.007 or less	φ0.007 or less	φ0.007 or less	φ0.007 or less
Guide Method		Extended contact ball bearing guide			
Primary Material		SUS440C quench hardened			
Finish		Super black chrome			
Load Capacity [N]		58.8 (6.0kgf)	58.8 (6.0kgf)	58.8 (6.0kgf)	58.8 (6.0kgf)
Max. Moment Capacity	Pitch [N·m]	2.0	2.0	2.0	2.0
	Roll [N·m]	3.0	3.0	3.0	3.0
	Yaw [N·m]	2.0	2.0	2.0	2.0
Moment Stiffness	Roll [°/N·cm]	0.6	0.6	0.6	0.6
	Yaw [°/N·cm]	0.6	0.6	0.6	0.6
Parallelism [μm]		30	30	30	30
Weight [kg]		0.2	0.2	0.2	0.2

Application Systems

Optics & Optical Coatings

Opto-Mechanics

Bases

Manual Stages

Actuators & Adjusters

Motorized Stages

Light Sources & Laser Safety

Index

Guide

X Axis Stages

XY Axis Stages

Z Axis Stages

XZ Axis Stages

XYZ Axis Stages

Rotation Stages

Goniometer

Tilt Stages

Vacuum

Ball Bearing Guide

Crossed Roller

Dovetail

Lapping

V Groove Screw

Others

15 × 15 mm

25 × 25 mm

40 × 40 mm

60 × 60 mm

65 × 65 mm

80 × 80 mm

100 × 100 mm

120 × 120 mm

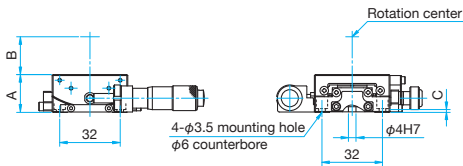
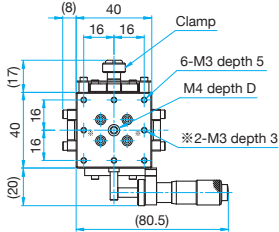
Others



Outline Drawing

GOHT-40A* *BMS

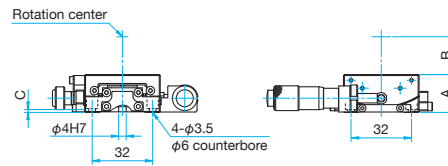
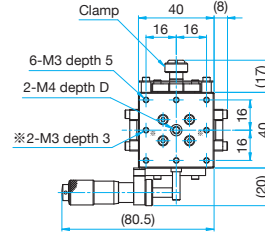
Hexagon socket head cap screw (stainless steel construction) M3×6...4 screws
Attachment pins for M4...1 pin



Part Number	A (mm)	B (mm)	C (mm)	D (mm)
GOHT-40A20BMS	20	20	2	4
GOHT-40A40BMS	20	40	1.5	4
GOHT-40A60BMS	15	60	1	3
GOHT-40A75BMS	15	75	1	3

GOHT-40A* *BMSR

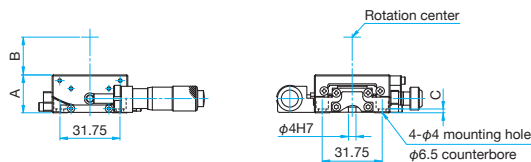
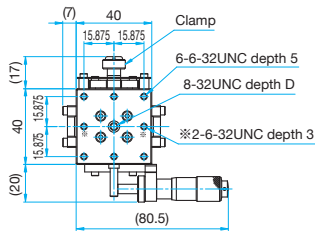
Hexagon socket head cap screw (stainless steel construction) M3×6...4 screws
Attachment pins for M4...1 pin



Part Number	A (mm)	B (mm)	C (mm)	D (mm)
GOHT-40A20BRMS	20	20	2	4
GOHT-40A40BRMS	20	40	1.5	4
GOHT-40A60BRMS	15	60	1	3
GOHT-40A75BRMS	15	75	1	3

GOHT-40A* *BMSUU

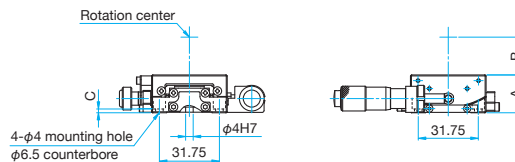
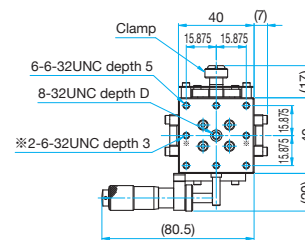
Low head hexagon socket head cap screw (stainless steel construction)
6-32UNC×1/4...4 screws, Attachment pins for 8-32UNC...1 pin



Part Number	A (mm)	B (mm)	C (mm)	D (mm)
GOHT-40A20BMSUU	20	20	2	4
GOHT-40A40BMSUU	20	40	1.5	4
GOHT-40A60BMSUU	15	60	1	3
GOHT-40A75BMSUU	15	75	1	3

GOHT-40A* *BMSRUU

Low head hexagon socket head cap screw (stainless steel construction)
6-32UNC×1/4...4 screws, Attachment pins for 8-32UNC...1 pin



Part Number	A (mm)	B (mm)	C (mm)	D (mm)
GOHT-40A20BMSRUU	20	20	2	4
GOHT-40A40BMSRUU	20	40	1.5	4
GOHT-40A60BMSRUU	15	60	1	3
GOHT-40A75BMSRUU	15	75	1	3

Application Systems

Optics & Optical Coatings

Opto-Mechanics

Bases

Manual Stages

Actuators & Adjusters

MotORIZED Stages

Light Sources & Laser Safety

Index

Guide

X Axis Stages

XY Axis Stages

Z Axis Stages

XZ Axis Stages

XYZ Axis Stages

Rotation Stages

Goniometer

Tilt Stages

Vacuum

Ball Bearing Guide

Crossed Roller

Dovetail

Lapping

V Groove Screw

Ohters

15 × 15 mm

25 × 25 mm

40 × 40 mm

60 × 60 mm

65 × 65 mm

80 × 80 mm

100 × 100 mm

120 × 120 mm

Others

Extended Contact Micrometer Goniometers

Stage Size 60 × 60 mm

GOHT-60A-S

RoHS

High precision goniometers with integrated bearing ways for superior stiffness, accuracy and durability.

- Integrated Extended Contact Bearing Ways for simpler construction, higher load and durability, and lower cost.
- Centering accuracy 10x better than typical dovetail goniometers.
- Designed for use in a variety of orientations. Not limited to horizontal mounting.
- Designed for use with precision alignment pins for ease of assembly.



Guide

- ▶ Attachment pins (GOHT-AP) can be purchased separately.
Reference E010 **Catalog Code** W7112
- ▶ Contact our sales team for information about custom center heights.
- ▶ Motorized version (OSMS-60A***) also available.
Reference G092 **Catalog Code** W9080

Attention

- ▶ Locking mechanism is operated using thumbscrew on side of stage.
- ▶ When assembled to an $\alpha\beta$ axis stage, the micrometer head of the α axis stage interferes. Please contact our Sales Division for more information.

Application Systems

Optics & Optical Coatings

Opto-Mechanics

Bases

Manual Stages

Actuators & Adjusters

Motorized Stages

Light Sources & Laser Safety

Index

Guide

X Axis Stages

XY Axis Stages

Z Axis Stages

XZ Axis Stages

XYZ Axis Stages

Rotation Stages

Goniometer

Tilt Stages

Vacuum

Ball Bearing Guide

Crossed Roller

Dovetail

Lapping

V Groove Screw

Others

15 × 15 mm

25 × 25 mm

40 × 40 mm

60 × 60 mm

65 × 65 mm

80 × 80 mm

100 × 100 mm

120 × 120 mm

Others

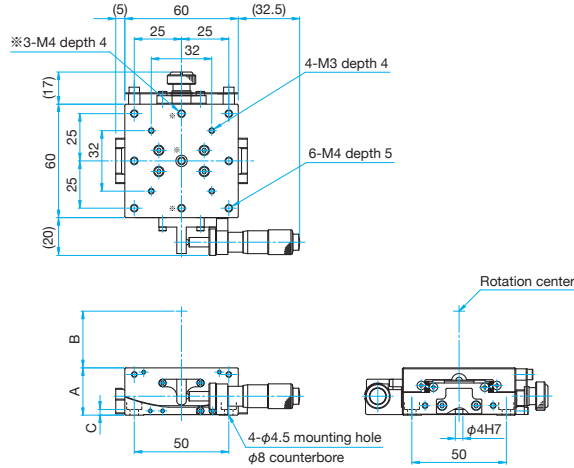
Specifications					
Part Number	METRIC	GOHT-60A35BMS	GOHT-60A60BMS	GOHT-60A85BMS	GOHT-60A105BMS
(Opposite Model)	METRIC	GOHT-60A35BMSR	GOHT-60A60BMSR	GOHT-60A85BMSR	GOHT-60A105BMSR
Stage Size [mm]		60×60	60×60	60×60	60×60
Axes of Travel		α axis			
Micrometer Position		Side	Side	Side	Side
Rotation Center Height [mm]		35±0.1	60±0.1	85±0.1	105±0.1
Angle Range [°]		±7	±4.5	±3.5	±3
Travel per Knob Rotation [°]		about 0.57	about 0.38	about 0.3	about 0.25
Rotation Center Displacement [mm]		φ0.007 or less	φ0.007 or less	φ0.007 or less	φ0.007 or less
Guide Method		Extended contact ball bearing guide			
Primary Material		SUS440C quench hardened			
Finish		Super black chrome			
Load Capacity [N]		98 (10.0kgf)	98 (10.0kgf)	98 (10.0kgf)	98 (10.0kgf)
Max. Moment Capacity	Pitch [N·m]	3.0	3.0	3.0	3.0
	Roll [N·m]	6.0	6.0	6.0	6.0
	Yaw [N·m]	3.0	3.0	3.0	3.0
Moment Stiffness	Roll ["/N·cm]	0.25	0.25	0.25	0.25
	Yaw ["/N·cm]	0.1	0.1	0.1	0.1
Parallelism [μm]		30	30	30	30
Weight [kg]		0.6	0.6	0.6	0.6



Outline Drawing

GOHT-60ABMS**

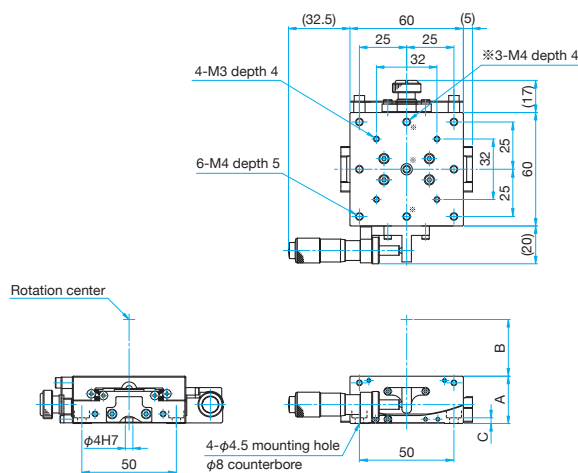
- Hexagon socket head cap screw (stainless steel construction) M4x8...4 screws
- Attachment pin for M4...1 pin



Part Number	A (mm)	B (mm)	C (mm)
GOHT-60A35BMS	25	35	3
GOHT-60A60BMS	25	60	3
GOHT-60A85BMS	20	85	2
GOHT-60A105BMS	20	105	2

GOHT-60ABMSR**

- Hexagon socket head cap screw (stainless steel construction) M4x8...4 screws
- Attachment pin for M4...1 pin



Part Number	A (mm)	B (mm)	C (mm)
GOHT-60A35BMSR	25	35	3
GOHT-60A60BMSR	25	60	3
GOHT-60A85BMSR	20	85	2
GOHT-60A105BMSR	20	105	2

Application Systems

Optics & Optical Coatings

Opto-Mechanics

Bases

Manual Stages

Actuators & Adjusters

Motoeized Stages

Light Sources & Laser Safety

Index

Guide

X Axis Stages

XY Axis Stages

Z Axis Stages

XZ Axis Stages

XYZ Axis Stages

Rotation Stages

Goniometer

Tilt Stages

Vacuum

Ball Bearing Guide

Crossed Roller

Dovetail

Lapping

V Groove Screw

Ohters

15 × 15 mm

25 × 25 mm

40 × 40 mm

60 × 60 mm

65 × 65 mm

80 × 80 mm

100 × 100 mm

120 × 120 mm

Others

Extended Contact Micrometer Goniometers

Stage Size 65 × 65 mm

GOHT-65A-S

RoHS

High precision goniometers with integrated bearing ways for superior stiffness, accuracy and durability.

- Integrated Extended Contact Bearing Ways for simpler construction, higher load and durability, and lower cost.
- Centering accuracy 10x better than typical dovetail goniometers.
- Designed for use in a variety of orientations. Not limited to horizontal mounting.
- Designed for use with precision alignment pins for ease of assembly.



Guide

- ▶ Attachment pins (GOHT-AP) can be purchased separately.
Reference E010 Catalog Code W7112
- ▶ Contact our Sales Division for information about custom center heights.

Attention

- ▶ Locking mechanism is operated using thumbscrew on side of stage.
- ▶ When assembled to an $\alpha\beta$ axis stage, the micrometer head of the α axis stage interferes. Please contact our Sales Division for more information.

Application Systems

Optics & Optical Coatings

Opto-Mechanics

Bases

Manual Stages

Actuators & Adjusters

Motorized Stages

Light Sources & Laser Safety

Index

Guide

X Axis Stages

XY Axis Stages

Z Axis Stages

XZ Axis Stages

XYZ Axis Stages

Rotation Stages

Goniometer

Tilt Stages

Vacuum

Ball Bearing Guide

Crossed Roller

Dovetail

Lapping

V Groove Screw

Others

15 × 15 mm

25 × 25 mm

40 × 40 mm

60 × 60 mm

65 × 65 mm

80 × 80 mm

100 × 100 mm

120 × 120 mm

Others

Specifications

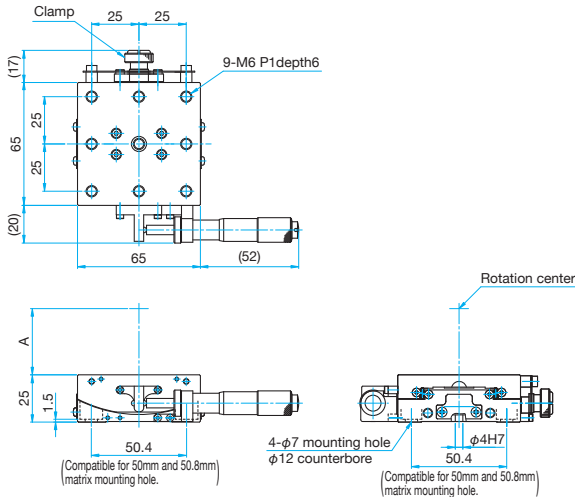
Part Number	METRIC	GOHT-65A50BMS-M6	GOHT-65A75BMS-M6	GOHT-65A100BMS-M6
	INCH	GOHT-65A50BMSUU	GOHT-65A75BMSUU	GOHT-65A100BMSUU
(Opposite Model)	METRIC	GOHT-65A50BMSR-M6	GOHT-65A75BMSR-M6	GOHT-65A100BMSR-M6
	INCH	GOHT-65A50BMSRUU	GOHT-65A75BMSRUU	GOHT-65A100BMSRUU
Stage Size [mm]		65×65	65×65	65×65
Axes of Travel			α axis	
Micrometer Position		Side	Side	Side
Rotation Center Height [mm]		50±0.1	75±0.1	100±0.1
Angle Range [°]		±10	±7	±6
Travel per Knob Rotation [°]		about 0.44	about 0.32	about 0.25
Rotation Center Displacement [mm]		φ0.007 or less	φ0.007 or less	φ0.007 or less
Guide Method		Extended contact ball bearing guide		
Primary Material		SUS440C quench hardened		
Finish		Super black chrome		
Load Capacity [N]		98 (10.0kgf)	98 (10.0kgf)	98 (10.0kgf)
Max. Moment Capacity	Pitch [N·m]	3.0	3.0	3.0
	Roll [N·m]	6.0	6.0	6.0
	Yaw [N·m]	3.0	3.0	3.0
Moment Stiffness	Roll [°/N·cm]	0.25	0.25	0.25
	Yaw [°/N·cm]	0.1	0.1	0.1
Parallelism [μm]		30	30	30
Weight [kg]		0.7	0.7	0.7



Outline Drawing

GOHT-65A* *BMS

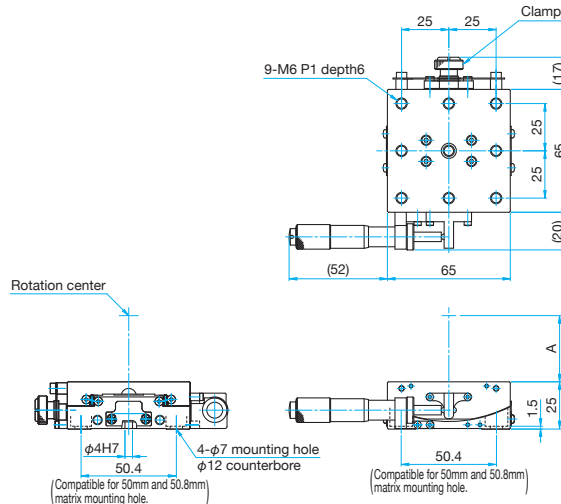
Hexagon socket head cap screw (stainless steel construction) M6×8...4 screws
Attachment pins for M6...1 pin



Part Number	A (mm)
GOHT-65A50BMS-M6	50
GOHT-65A75BMS-M6	75
GOHT-65A100BMS-M6	100

GOHT-65A* *BMSR

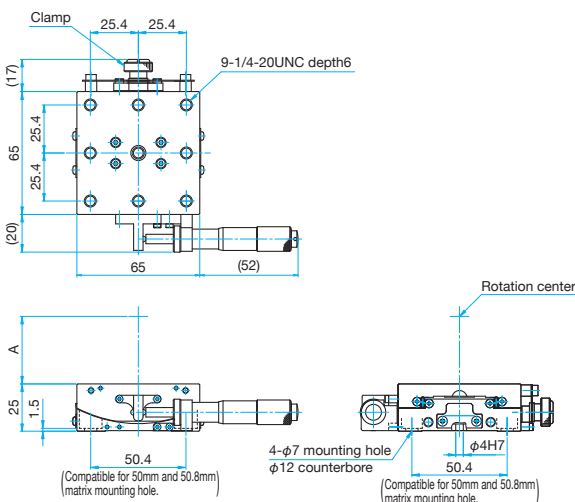
Hexagon socket head cap screw (stainless steel construction) M6×8...4 screws
Attachment pins for M6...1 pin



Part Number	A (mm)
GOHT-65A50BMSR-M6	50
GOHT-65A75BMSR-M6	75
GOHT-65A100BMSR-M6	100

GOHT-65A* *BMSUU

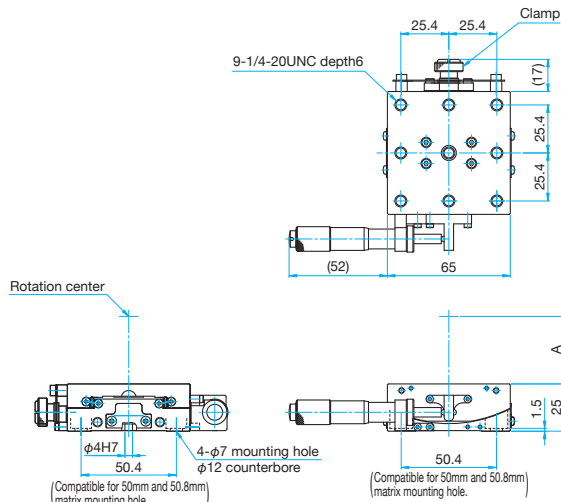
Low head hexagon socket head cap screw (stainless steel construction)
1/4-20UNC×1/4...4 screws, Attachments pin for 1/420UNC...1 pin



Part Number	A (mm)
GOHT-65A50BMSUU	50
GOHT-65A75BMSUU	75
GOHT-65A100BMSUU	100

GOHT-65A* *BMSRUU

Low head hexagon socket head cap screw (stainless steel construction)
1/4-20UNC×1/4...4 screws, Attachment pins for 1/420UNC...1 pin



Part Number	A (mm)
GOHT-65A50BMSRUU	50
GOHT-65A75BMSRUU	75
GOHT-65A100BMSRUU	100

Application Systems

Optics & Optical Coatings

Opto-Mechanics

Bases

Manual Stages

Actuators & Adjusters

Motoeized Stages

Light Sources & Laser Safety

Index

Guide

X Axis Stages

XY Axis Stages

Z Axis Stages

XZ Axis Stages

XYZ Axis Stages

Rotation Stages

Goniometer

Tilt Stages

Vacuum

Ball Bearing Guide

Crossed Roller

Dovetail

Lapping

V Groove Screw

Ohters

15 × 15 mm

25 × 25 mm

40 × 40 mm

60 × 60 mm

65 × 65 mm

80 × 80 mm

100 × 100 mm

120 × 120 mm

Others