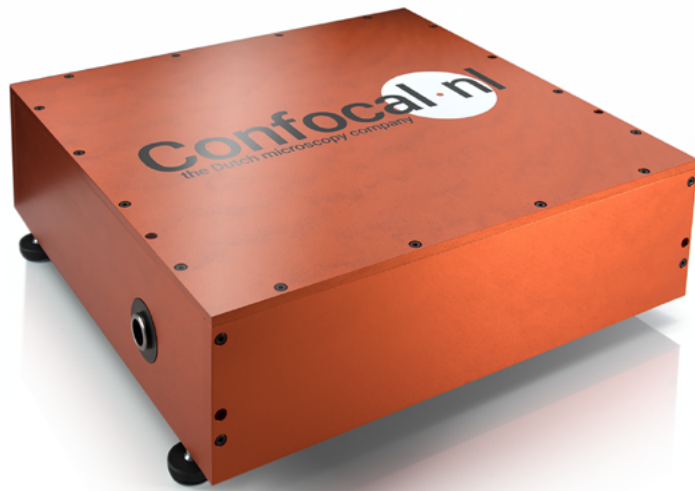
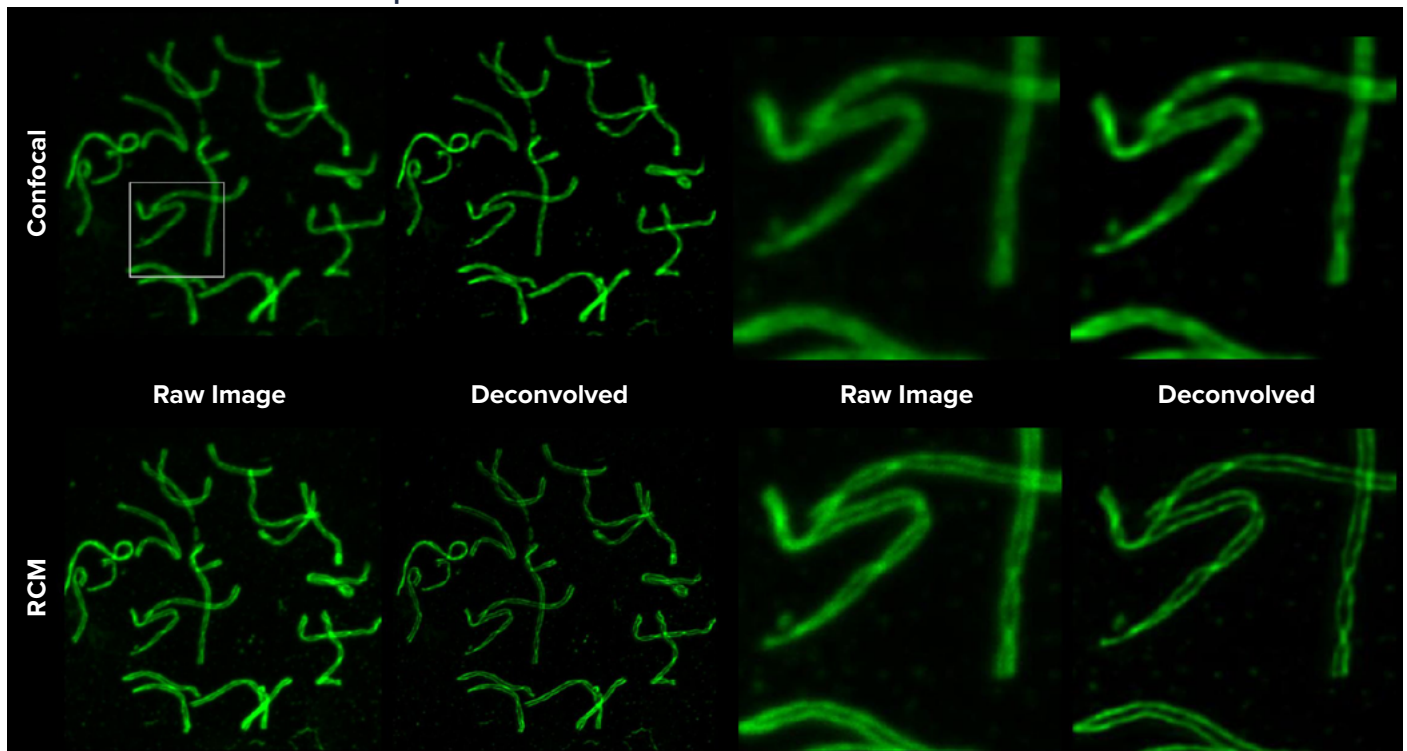


Deconvolution



Confocal.nl
the Dutch microscopy company

Full Spread**Individual Chromosomes**

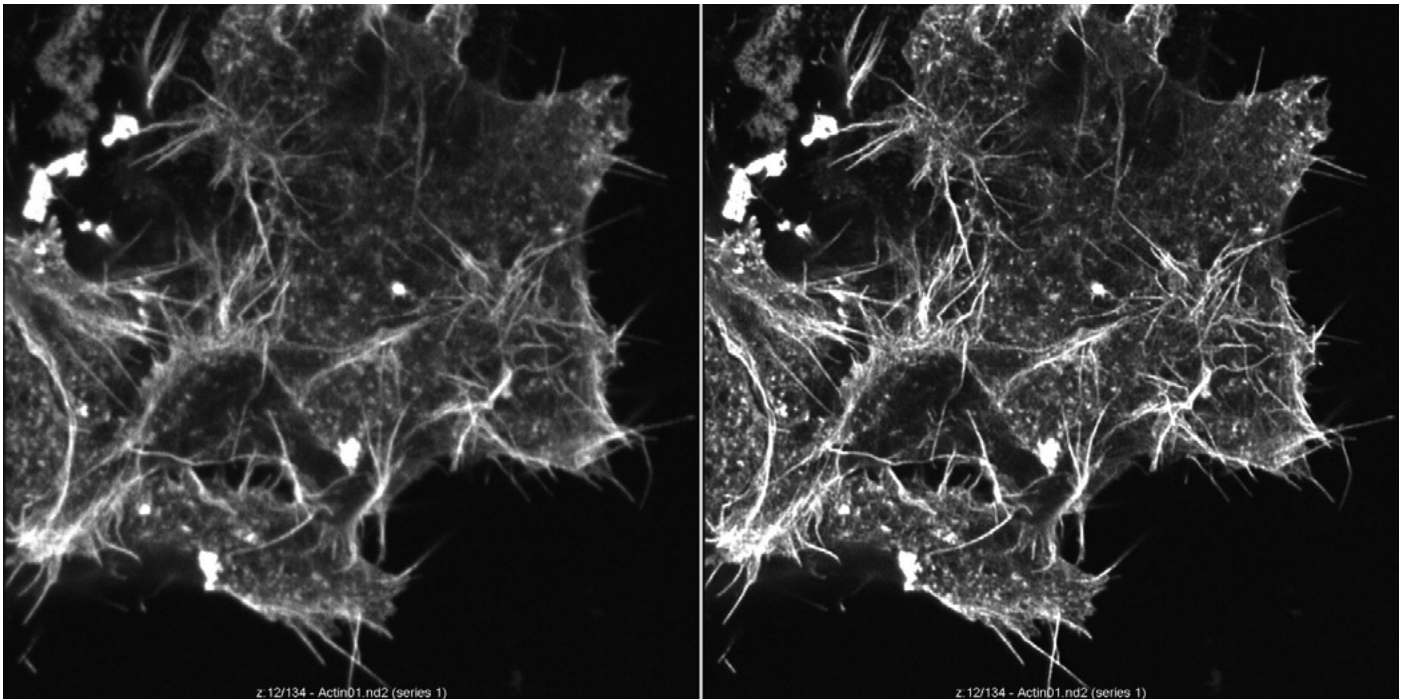
Representative nuclear spread from fixed mouse spermatocytes, immunostained for SYCP3 a component of the synaptonemal complex (Alexa 488-labelling) imaged with RCM without using re-scanning (confocal) and with re-scanning (RCM).

Sample courtesy of A. Agostinho – Advanced Light Microscopy Facility, Science for Life Laboratory

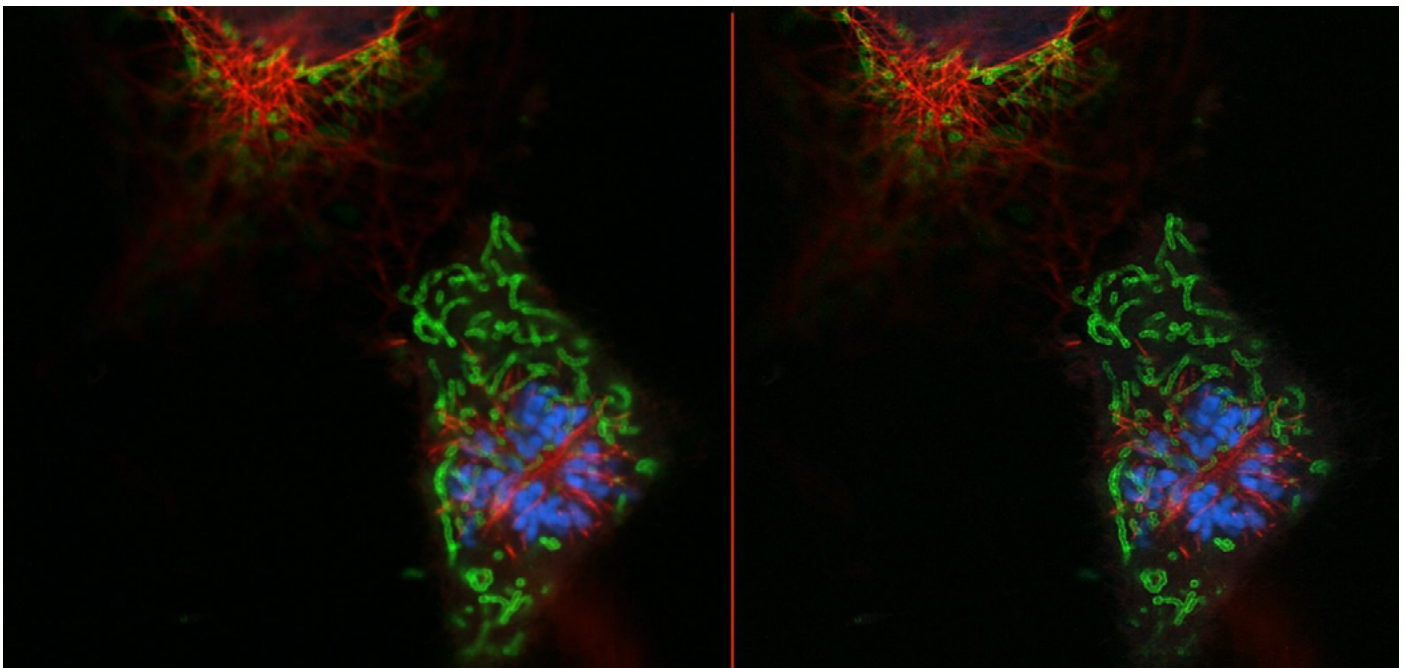
C. Höög – Department of Cell and Molecular Biology, Karolinska Institutet.

Imaging and deconvolution by Erik Manders (Confocal.nl). For deconvolution SVI Huygens software was used.

Deconvolution



N1E-115 neuroblastoma cells, made during HOLM 2017 by the students attending one of the workshops.
On the left, raw image from RCM, on the right the same image after the Microvolution deconvolution.



Mitotic cell – Cos7 cell line with antibody labeling of nucleus (blue), mitochondria (green), and tubulin (red).
Samples prepared by Jana Doehner (University of Zurich).
Images taken by Stan Hilt (Confocal.nl) during the Bioluming meeting Utrecht.
Original RCM image (left), and the result of NIS Elements deconvolution (right).